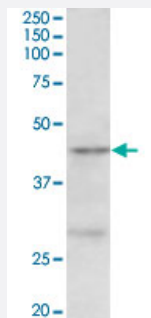


# PRMT6 polyclonal antibody

Catalog # PAB25456      Size 100 ug

## Applications



### Western Blot (Cell lysate)

PRMT6 polyclonal antibody (Cat # PAB25456) (0.5 ug/mL) staining of MCF-7 lysate (35 ug protein in RIPA buffer). Primary incubation was 1 hour. Detected by chemiluminescence.

## Specification

<b>Product Description</b>	Goat polyclonal antibody raised against synthetic peptide of PRMT6.
<b>Immunogen</b>	A synthetic peptide corresponding to internal region of human PRMT6.
<b>Sequence</b>	ERDQLYECYSD
<b>Host</b>	Goat
<b>Theoretical MW (kDa)</b>	45
<b>Reactivity</b>	Human
<b>Form</b>	Liquid
<b>Purification</b>	Antigen affinity purification
<b>Concentration</b>	0.5 mg/mL
<b>Recommend Usage</b>	ELISA (1:128000) Western Blot (0.5-2 ug/mL) The optimal working dilution should be determined by the end user.
<b>Storage Buffer</b>	In Tris saline, pH 7.3 (0.02% sodium azide, 0.5% BSA)

**Storage Instruction**

Store at -20°C.  
Aliquot to avoid repeated freezing and thawing.

**Note**

This product contains sodium azide: a POISONOUS AND HAZARDOUS SUBSTANCE which should be handled by trained staff only.

## Applications

- Western Blot (Cell lysate)

PRMT6 polyclonal antibody (Cat # PAB25456) (0.5 ug/mL) staining of MCF-7 lysate (35 ug protein in RIPA buffer). Primary incubation was 1 hour. Detected by chemiluminescence.

- Enzyme-linked Immunoabsorbent Assay

## Gene Info — PRMT6

**Entrez GeneID**[55170](#)**Protein Accession#**[NP\\_060607.2](#)**Gene Name**

PRMT6

**Gene Alias**

FLJ10559, HRMT1L6

**Gene Description**

protein arginine methyltransferase 6

**Omim ID**[608274](#)**Gene Ontology**[Hyperlink](#)**Gene Summary**

Protein arginine N-methyltransferases, such as PRMT6, catalyze the sequential transfer of a methyl group from S-adenosyl-L-methionine to the side chain nitrogens of arginine residues within proteins to form methylated arginine derivatives and S-adenosyl-L-homocysteine.[supplied by OMIM]

**Other Designations**

HMT1 hnRNP methyltransferase-like 6|protein arginine N-methyltransferase 6

## Disease

- [Acquired Immunodeficiency Syndrome](#)
- [Disease Progression](#)
- [Genetic Predisposition to Disease](#)

- [HIV Seropositivity](#)