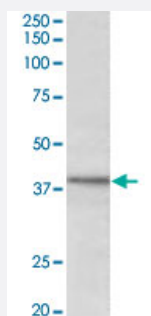


C12orf29 polyclonal antibody

Catalog # PAB25448

Size 100 ug

Applications



Western Blot (Cell lysate)

C12orf29 polyclonal antibody (Cat # PAB25448) (1 ug/mL) staining of HeLa lysate (35 ug protein in RIPA buffer). Primary incubation was 1 hour. Detected by chemiluminescence.

Specification

Product Description	Goat polyclonal antibody raised against synthetic peptide of C12orf29.
Immunogen	A synthetic peptide corresponding to amino acids 30-43 at internal region of human C12orf29.
Sequence	CQPFKVLATETVSHK
Host	Goat
Theoretical MW (kDa)	38
Reactivity	Human
Specificity	This antibody is expected to recognize isoform 1 (Q8N999-1) and isoform 3 (Q8N999-3).
Form	Liquid
Purification	Antigen affinity purification
Concentration	0.5 mg/mL
Recommend Usage	ELISA (1:4000) Western Blot (1-3 ug/mL) The optimal working dilution should be determined by the end user.

Storage Buffer	In Tris saline, pH 7.3 (0.02% sodium azide, 0.5% BSA)
Storage Instruction	Store at -20°C. Aliquot to avoid repeated freezing and thawing.
Note	This product contains sodium azide: a POISONOUS AND HAZARDOUS SUBSTANCE which should be handled by trained staff only.

Applications

- Western Blot (Cell lysate)

C12orf29 polyclonal antibody (Cat # PAB25448) (1 ug/mL) staining of HeLa lysate (35 ug protein in RIPA buffer). Primary incubation was 1 hour. Detected by chemiluminescence.

- Enzyme-linked Immunoabsorbent Assay

Gene Info — C12orf29

Entrez GeneID	91298
Protein Accession#	NP_001009894.2
Gene Name	C12orf29
Gene Alias	DKFZp313K0436, DKFZp434N2030, DKFZp686L04169, FLJ38158, MGC102978
Gene Description	chromosome 12 open reading frame 29
Gene Ontology	Hyperlink
Other Designations	hypothetical protein LOC91298