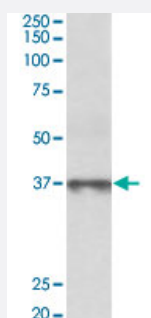


MAT2B polyclonal antibody

Catalog # PAB25446 Size 100 ug

Applications



Western Blot (Tissue lysate)

MAT2B polyclonal antibody (Cat # PAB25446) (0.3 ug/mL) staining of human thymus lysate (35 ug protein in RIPA buffer). Primary incubation was 1 hour. Detected by chemiluminescence.

Specification

Product Description	Goat polyclonal antibody raised against synthetic peptide of MAT2B.
Immunogen	A synthetic peptide corresponding to N-terminus of human MAT2B.
Sequence	REKELSIHFVPGSC
Host	Goat
Theoretical MW (kDa)	37
Reactivity	Human
Specificity	This antibody is expected to recognize reported isoform 1 (NP_037415.1) only.
Form	Liquid
Purification	Antigen affinity purification
Concentration	0.5 mg/mL
Recommend Usage	ELISA (1:128000) Western Blot (0.3-1 ug/mL) The optimal working dilution should be determined by the end user.

Storage Buffer	In Tris saline, pH 7.3 (0.02% sodium azide, 0.5% BSA)
Storage Instruction	Store at -20°C. Aliquot to avoid repeated freezing and thawing.
Note	This product contains sodium azide: a POISONOUS AND HAZARDOUS SUBSTANCE which should be handled by trained staff only.

Applications

- Western Blot (Tissue lysate)

MAT2B polyclonal antibody (Cat # PAB25446) (0.3 ug/mL) staining of human thymus lysate (35 ug protein in RIPA buffer). Primary incubation was 1 hour. Detected by chemiluminescence.

- Enzyme-linked Immunoabsorbent Assay

Gene Info — MAT2B

Entrez GeneID	27430
Protein Accession#	NP_037415.1
Gene Name	MAT2B
Gene Alias	MAT-II, MATIIBeta, MGC12237, Nbla02999, SDR23E1, TGR
Gene Description	methionine adenosyltransferase II, beta
Omim ID	605527
Gene Ontology	Hyperlink
Gene Summary	The protein encoded by this gene belongs to the methionine adenosyltransferase (MAT) family. MAT catalyzes the biosynthesis of S-adenosylmethionine from methionine and ATP. This protein is the regulatory beta subunit of MAT. Alternative splicing occurs at this locus and two transcript variants encoding distinct isoforms have been identified. [provided by RefSeq]
Other Designations	beta regulatory subunit of methionine adenosyltransferase dTDP-4-keto-6-deoxy-D-glucose 4-reductase putative protein product of Nbla02999 short chain dehydrogenase/reductase family 23E, member 1

Pathway

- [Biosynthesis of plant hormones](#)
- [Cysteine and methionine metabolism](#)
- [Metabolic pathways](#)
- [Selenoamino acid metabolism](#)

Disease

- [Cardiovascular Diseases](#)
- [Cleft Lip](#)
- [Cleft Palate](#)
- [Diabetes Mellitus](#)
- [Edema](#)
- [Genetic Predisposition to Disease](#)
- [Spinal Dysraphism](#)