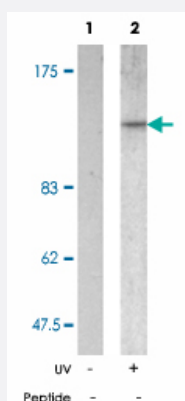


# SMC1A (phospho S957) polyclonal antibody

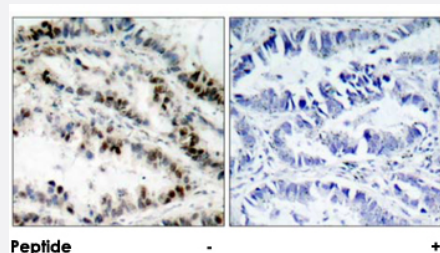
Catalog # PAB25427      Size 100 ug

## Applications



### Western Blot (Cell lysate)

Western blot analysis of extract from K-562 cells, untreated or treated with UV (20 min), using SMC1A (phospho S957) polyclonal antibody (Cat # PAB25427).



### Immunohistochemistry (Formalin/PFA-fixed paraffin-embedded sections)

Immunohistochemical analysis of paraffin-embedded human lung carcinoma tissue using SMC1A (phospho S957) polyclonal antibody (Cat # PAB25427).

## Specification

<b>Product Description</b>	Rabbit polyclonal antibody raised against synthetic phosphopeptide of SMC1A.
<b>Immunogen</b>	Synthetic phosphopeptide corresponding to residues surrounding S957 of human SMC1A.
<b>Sequence</b>	G-S-Sp-Q-G
<b>Host</b>	Rabbit
<b>Reactivity</b>	Human, Mouse
<b>Form</b>	Liquid

Purification	Affinity purification
Recommend Usage	Western Blot (1:500-1:1000) Immunohistochemistry (1:50-100) The optimal working dilution should be determined by the end user.
Storage Buffer	In PBS (without $Mg^{2+}$ and $Ca^{2+}$ ), 150 mM NaCl, pH 7.4 (50% glycerol, 0.02% sodium azide)
Storage Instruction	Store at -20°C. Aliquot to avoid repeated freezing and thawing.
Note	This product contains sodium azide: a POISONOUS AND HAZARDOUS SUBSTANCE which should be handled by trained staff only.

## Applications

- Western Blot (Cell lysate)

Western blot analysis of extract from K-562 cells, untreated or treated with UV (20 min), using SMC1A (phospho S957) polyclonal antibody (Cat # PAB25427).

- Immunohistochemistry (Formalin/PFA-fixed paraffin-embedded sections)

Immunohistochemical analysis of paraffin-embedded human lung carcinoma tissue using SMC1A (phospho S957) polyclonal antibody (Cat # PAB25427).

## Gene Info — SMC1A

Entrez GeneID	<a href="#">8243</a>
Protein Accession#	<a href="#">Q14683</a>
Gene Name	SMC1A
Gene Alias	CDLS2, DKFZp686L19178, DXS423E, KIAA0178, MGC138332, SB1.8, SMC1, SMC1L1, SMC1alpha, SMCB
Gene Description	structural maintenance of chromosomes 1A
Omim ID	<a href="#">300040</a> <a href="#">300590</a>
Gene Ontology	<a href="#">Hyperlink</a>

**Gene Summary**

Proper cohesion of sister chromatids is a prerequisite for the correct segregation of chromosomes during cell division. The cohesin multiprotein complex is required for sister chromatid cohesion. This complex is composed partly of two structural maintenance of chromosomes (SMC) proteins, SMC3 and either SMC1L2 or the protein encoded by this gene. Most of the cohesin complexes dissociate from the chromosomes before mitosis, although those complexes at the kinetochore remain. Therefore, the encoded protein is thought to be an important part of functional kinetochores. In addition, this protein interacts with BRCA1 and is phosphorylated by ATM, indicating a potential role for this protein in DNA repair. This gene, which belongs to the SMC gene family, is located in an area of the X-chromosome that escapes X inactivation. [provided by RefSeq]

**Other Designations**

OTTHUMP00000061876|SMC1 (structural maintenance of chromosomes 1, yeast)-like 1|SMC1 structural maintenance of chromosomes 1-like 1|segregation of mitotic chromosomes 1

**Pathway**

- [Cell cycle](#)

**Disease**

- [De Lange Syndrome](#)