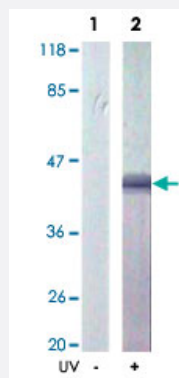


MAP2K4 (phospho S80) polyclonal antibody

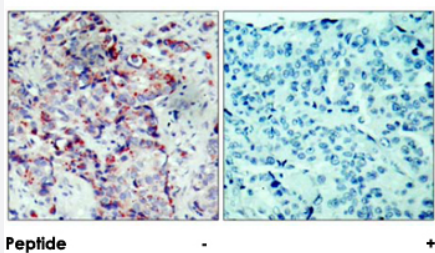
Catalog # PAB25413 Size 100 ug

Applications



Western Blot (Cell lysate)

Western blot analysis of extract from 293 cells treated or untreated with UV, using MAP2K4 (phospho S80) polyclonal antibody (Cat # PAB25413).



Immunohistochemistry (Formalin/PFA-fixed paraffin-embedded sections)

Immunohistochemical analysis of paraffin-embedded human breast carcinoma tissue, using MAP2K4 (phospho S80) polyclonal antibody (Cat # PAB25413).

Specification

Product Description	Rabbit polyclonal antibody raised against synthetic phosphopeptide of MAP2K4.
Immunogen	Synthetic phosphopeptide corresponding to residues surrounding S80 of human MAP2K4.
Sequence	T-H-Sp-I-E
Host	Rabbit
Reactivity	Human, Mouse, Rat
Form	Liquid

Purification	Affinity purification
Recommend Usage	Western Blot (1:500-1:1000) Immunohistochemistry (1:50-100) The optimal working dilution should be determined by the end user.
Storage Buffer	In PBS (without Mg^{2+} and Ca^{2+}), 150 mM NaCl, pH 7.4 (50% glycerol, 0.02% sodium azide)
Storage Instruction	Store at -20°C. Aliquot to avoid repeated freezing and thawing.
Note	This product contains sodium azide: a POISONOUS AND HAZARDOUS SUBSTANCE which should be handled by trained staff only.

Applications

- Western Blot (Cell lysate)

Western blot analysis of extract from 293 cells treated or untreated with UV, using MAP2K4 (phospho S80) polyclonal antibody (Cat # PAB25413).

- Immunohistochemistry (Formalin/PFA-fixed paraffin-embedded sections)

Immunohistochemical analysis of paraffin-embedded human breast carcinoma tissue, using MAP2K4 (phospho S80) polyclonal antibody (Cat # PAB25413).

Gene Info — MAP2K4

Entrez GeneID	6416
Protein Accession#	P45985
Gene Name	MAP2K4
Gene Alias	JNKK, JNKK1, MAPKK4, MEK4, MKK4, PRKMK4, SEK1, SERK1
Gene Description	mitogen-activated protein kinase kinase 4
Omim ID	601335
Gene Ontology	Hyperlink

Gene Summary

This gene encodes a dual specificity protein kinase that belongs to the Ser/Thr protein kinase family. This kinase is a direct activator of MAP kinases in response to various environmental stresses or mitogenic stimuli. It has been shown to activate MAPK8/JNK1, MAPK9/JNK2, and MAPK14/p38, but not MAPK1/ERK2 or MAPK3/ERK3. This kinase is phosphorylated, and thus activated by MAP3K1/MEKK. The knockout studies in mice suggested the roles of this kinase in mediating survival signal in T cell development, as well as in the organogenesis of liver. [provided by RefSeq]

Other Designations

JNK activating kinase 1|JNK-activated kinase 1|MAP kinase kinase 4|MAPK/ERK kinase 4|SAPK/ERK kinase 1|c-Jun N-terminal kinase kinase 1|dual specificity mitogen-activated protein kinase 4

Pathway

- [Epithelial cell signaling in Helicobacter pylori infection](#)
- [ErbB signaling pathway](#)
- [Fc epsilon RI signaling pathway](#)
- [GnRH signaling pathway](#)
- [MAPK signaling pathway](#)
- [Toll-like receptor signaling pathway](#)

Disease

- [Colorectal Neoplasms](#)
- [Genetic Predisposition to Disease](#)
- [Lung Neoplasms](#)
- [Pancreatic cancer](#)
- [Pancreatic Neoplasms](#)