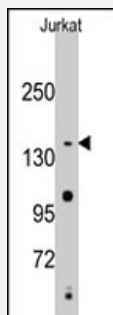


SMC2 polyclonal antibody

Catalog # PAB2537

Size 400 uL

Applications



Western Blot (Cell lysate)

Western blot analysis of SMC2 polyclonal antibody (Cat # PAB2537) in Jurkat cell line lysates (35 ug/lane). SMC2 (arrow) was detected using the purified polyclonal antibody.

Specification

Product Description	Rabbit polyclonal antibody raised against synthetic peptide of SMC2.
Immunogen	A synthetic peptide (conjugated with KLH) corresponding to C-terminus of human SMC2.
Host	Rabbit
Reactivity	Human
Form	Liquid
Purification	Ammonium sulfate precipitation
Recommend Usage	Western Blot (1:1000) The optimal working dilution should be determined by the end user.
Storage Buffer	In PBS (0.09% sodium azide)
Storage Instruction	Store at 4°C. For long term storage store at -20°C. Aliquot to avoid repeated freezing and thawing.
Note	This product contains sodium azide: a POISONOUS AND HAZARDOUS SUBSTANCE which should be handled by trained staff only.

Applications

- Western Blot (Cell lysate)

Western blot analysis of SMC2 polyclonal antibody (Cat # PAB2537) in Jurkat cell line lysates (35 ug/lane). SMC2 (arrow) was detected using the purified polyclonal antibody.

Gene Info — SMC2

Entrez GeneID	10592
Protein Accession#	NP_006435:Q6IEE0
Gene Name	SMC2
Gene Alias	CAP-E, CAPE, FLJ10093, SMC2L1, hCAP-E
Gene Description	structural maintenance of chromosomes 2
Omim ID	605576
Gene Ontology	Hyperlink
Gene Summary	yeast)-like 1 SMC2 structural maintenance of chromosomes 2-like 1 chromosome-associated protein E structural maintenance of chromosomes (SMC) family member
Other Designations	OTTHUMP00000021818 OTTHUMP00000021819 SMC2 (structural maintenance of chromosomes 2, yeast)-like 1 SMC2 structural maintenance of chromosomes 2-like 1 chromosome-associated protein E structural maintenance of chromosomes (SMC) family member, chromosome-as

Publication Reference

- [Condensin mutations and abnormal chromosomal structures in pyothorax-associated lymphoma.](#)

Ham MF, Takakuwa T, Rahadiani N, Tresnasari K, Nakajima H, Aozasa K.

Cancer Science 2007 May; 98(7):1041.

Application: Flow Cyt, IF, WB, Human, HeLa, IB-4 cells, PAL cell lines, OPL-1, -2, -3, -4, -5, and -7 were established in patients with Pyothorax-associated lymphoma

- [Identification of two distinct human SMC protein complexes involved in mitotic chromosome dynamics.](#)

Schmiesing JA, Ball AR Jr, Gregson HC, Alderton JM, Zhou S, Yokomori K.

PNAS 1998 Oct; 95(22):12906.

Application: IF, IP, WB-Ce, Human, HeLa, HT-1080 cells