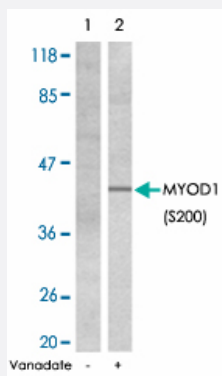


MYOD1 (phospho S200) polyclonal antibody

Catalog # PAB25296 Size 100 ug

Applications



Western Blot (Cell lysate)

Western blot analysis of extracts from HeLa cells, untreated or treated with vanadate (1mg/ml, 30min), using MYOD1 (phospho S200) polyclonal antibody (Cat # PAB25296).

Specification

Product Description	Rabbit polyclonal antibody raised against synthetic phosphopeptide of MYOD1.
Immunogen	Synthetic phosphopeptide corresponding to residues surrounding S200 of human MYOD1.
Sequence	A-S-Sp-P-R
Host	Rabbit
Theoretical MW (kDa)	40
Reactivity	Human, Mouse, Rat
Form	Liquid
Purification	Affinity chromatography
Concentration	1 mg/mL
Recommend Usage	Western Blot (1:500-1:1000) The optimal working dilution should be determined by the end user.

Storage Buffer	In PBS (without Mg ²⁺ and Ca ²⁺), 150 mM NaCl, pH 7.4 (50% glycerol, 0.02% sodium azide)
Storage Instruction	Store at -20°C. Aliquot to avoid repeated freezing and thawing.
Note	This product contains sodium azide: a POISONOUS AND HAZARDOUS SUBSTANCE which should be handled by trained staff only.

Applications

- Western Blot (Cell lysate)

Western blot analysis of extracts from HeLa cells, untreated or treated with vanadate (1mg/ml, 30min), using MYOD1 (phospho S200) polyclonal antibody (Cat # PAB25296).

Gene Info — MYOD1

Entrez GeneID	4654
Protein Accession#	P15172
Gene Name	MYOD1
Gene Alias	MYF3, MYOD, PUM, bHLHc1
Gene Description	myogenic differentiation 1
Omim ID	159970
Gene Ontology	Hyperlink
Gene Summary	This gene encodes a nuclear protein that belongs to the basic helix-loop-helix family of transcription factors and the myogenic factors subfamily. It regulates muscle cell differentiation by inducing cell cycle arrest, a prerequisite for myogenic initiation. The protein is also involved in muscle regeneration. It activates its own transcription which may stabilize commitment to myogenesis. [provided by RefSeq]
Other Designations	myoblast determination protein 1 myogenic factor 3

Disease

- [Carotid Artery Diseases](#)
- [Plaque](#)