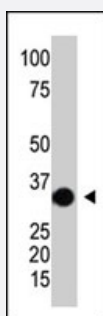


# SULT2A1 polyclonal antibody

Catalog # PAB2528

Size 400 uL

## Applications



### Western Blot (Tissue lysate)

The SULT2A1 polyclonal antibody (Cat # PAB2528) is used in Western blot to detect SULT2A1 in mouse kidney tissue lysate.

## Specification

<b>Product Description</b>	Rabbit polyclonal antibody raised against synthetic peptide of SULT2A1.
<b>Immunogen</b>	A synthetic peptide (conjugated with KLH) corresponding to C-terminus of human SULT2A1.
<b>Host</b>	Rabbit
<b>Reactivity</b>	Human, Mouse
<b>Form</b>	Liquid
<b>Purification</b>	Protein G purification
<b>Recommend Usage</b>	Western Blot (1:1000) The optimal working dilution should be determined by the end user.
<b>Storage Buffer</b>	In PBS (0.09% sodium azide)
<b>Storage Instruction</b>	Store at 4°C. For long term storage store at -20°C. Aliquot to avoid repeated freezing and thawing.
<b>Note</b>	This product contains sodium azide: a POISONOUS AND HAZARDOUS SUBSTANCE which should be handled by trained staff only.

## Applications

- Western Blot (Tissue lysate)

The SULT2A1 polyclonal antibody (Cat # PAB2528) is used in Western blot to detect SULT2A1 in mouse kidney tissue lysate.

## Gene Info — SULT2A1

Entrez GeneID	<a href="#">6822</a>
Protein Accession#	<a href="#">NP_003158</a>
Gene Name	SULT2A1
Gene Alias	DHEA-ST, DHEAS, HST, ST2, ST2A3, STD, hSTa
Gene Description	sulfotransferase family, cytosolic, 2A, dehydroepiandrosterone (DHEA)-preferring, member 1
Omim ID	<a href="#">125263</a>
Gene Ontology	<a href="#">Hyperlink</a>
Gene Summary	Sulfotransferase enzymes catalyze the sulfate conjugation of many hormones, neurotransmitters, drugs, and xenobiotic compounds. These cytosolic enzymes are different in their tissue distributions and substrate specificities. The gene structure (number and length of exons) is similar among family members. This gene is primarily expressed in liver and adrenal tissues where the encoded protein sulfates steroids and bile acids. [provided by RefSeq]
Other Designations	alcohol sulfotransferase alcohol/hydroxysteroid sulfotransferase dehydroepiandrosterone sulfotransferase hydroxysteroid sulfotransferase sulfotransferase family 2A, dehydroepiandrosterone (DHEA)-preferring, member 1 sulfotransferase family, cytosolic, 2A,

## Publication Reference

- [Cloning and expression of human liver dehydroepiandrosterone sulphotransferase.](#)

Comer KA, Falany JL, Falany CN.

The Biochemical Journal 1993 Jan; 289(Pt 1):233.

Application: WB-Ti, WB-Tr, Human, Monkey, Liver, COS-7 cells

- [Molecular cloning of the alcohol/hydroxysteroid form \(hSTa\) of sulfotransferase from human liver.](#)

Kong AN, Yang L, Ma M, Tao D, Bjornsson TD.

Biochemical and Biophysical Research Communications 1992 Aug; 187(1):448.

- [Human liver dehydroepiandrosterone sulfotransferase: molecular cloning and expression of cDNA.](#)

Otterness DM, Wieben ED, Wood TC, Watson WG, Madden BJ, McCormick DJ, Weinshilboum RM.

Molecular Pharmacology 1992 May; 41(5):865.

## Disease

- [Asperger Syndrome](#)
- [Autistic Disorder](#)
- [Breast Neoplasms](#)
- [Kidney Failure](#)
- [Polycystic Ovary Syndrome](#)
- [Prostate cancer](#)
- [Prostatic Neoplasms](#)
- [Social Perception](#)