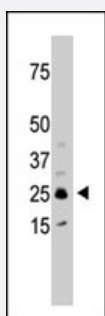


SULT1C2 polyclonal antibody

Catalog # PAB2526

Size 400 uL

Applications



Western Blot (Tissue lysate)

The SULT1C2 polyclonal antibody (Cat # PAB2526) is used in Western blot to detect SULT1C2 in mouse kidney tissue lysate.

Specification

Product Description	Rabbit polyclonal antibody raised against synthetic peptide of SULT1C2.
Immunogen	A synthetic peptide (conjugated with KLH) corresponding to internal region of human SULT1C2.
Host	Rabbit
Reactivity	Human, Mouse
Form	Liquid
Purification	Protein G purification
Recommend Usage	Western Blot (1:1000) The optimal working dilution should be determined by the end user.
Storage Buffer	In PBS (0.09% sodium azide)
Storage Instruction	Store at 4°C. For long term storage store at -20°C. Aliquot to avoid repeated freezing and thawing.
Note	This product contains sodium azide: a POISONOUS AND HAZARDOUS SUBSTANCE which should be handled by trained staff only.

Applications

- Western Blot (Tissue lysate)

The SULT1C2 polyclonal antibody (Cat # PAB2526) is used in Western blot to detect SULT1C2 in mouse kidney tissue lysate.

Gene Info — SULT1C2

Entrez GeneID [6819](#)

Protein Accession# [NP_789795](#)

Gene Name SULT1C2

Gene Alias ST1C1, ST1C2, SULT1C1, humSULTC2

Gene Description sulfotransferase family, cytosolic, 1C, member 2

Omim ID [602385](#)

Gene Ontology [Hyperlink](#)

Gene Summary Sulfotransferase enzymes catalyze the sulfate conjugation of many hormones, neurotransmitters, drugs, and xenobiotic compounds. These cytosolic enzymes are different in their tissue distributions and substrate specificities. The gene structure (number and length of exons) is similar among family members. This gene encodes a protein that belongs to the SULT1 subfamily, responsible for transferring a sulfo moiety from PAPS to phenol-containing compounds. Two alternatively spliced transcript variants encoding different isoforms have been described for this gene. [provided by RefSeq]

Other Designations sulfotransferase 1C1|sulfotransferase family, cytosolic, 1C, member 1

Disease

- [Adenocarcinoma](#)
- [Esophageal Neoplasms](#)
- [Head and Neck Neoplasms](#)
- [Hearing Loss](#)
- [Kidney Failure](#)
- [Leukemia](#)

- [Neoplasm Recurrence](#)
- [Neoplasms](#)
- [Recurrence](#)