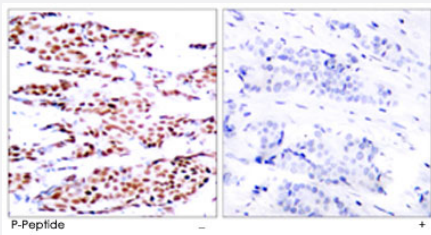


JUNB (phospho S79) polyclonal antibody

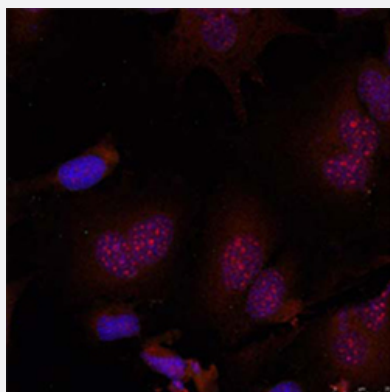
Catalog # PAB25247 Size 100 ug

Applications



Immunohistochemistry (Formalin/PFA-fixed paraffin-embedded sections)

Immunohistochemical analysis of paraffin-embedded human breast carcinoma tissue using JUNB (phospho S79) polyclonal antibody (Cat # PAB25247).



Immunofluorescence

Immunofluorescence staining of methanol-fixed HeLa cells using JUNB (phospho S79) polyclonal antibody (Cat # PAB25247).

Specification

Product Description	Rabbit polyclonal antibody raised against synthetic phosphopeptide of JUNB.
Immunogen	Synthetic phosphopeptide corresponding to residues surrounding S79 of human JUNB.
Sequence	G-A-Sp-L-K
Host	Rabbit
Reactivity	Human, Mouse, Rat
Form	Liquid

Purification	Affinity chromatography
Concentration	1 mg/mL
Recommend Usage	Immunohistochemistry (1:50-1:100) Immunofluorescence (1:100-1:200) The optimal working dilution should be determined by the end user.
Storage Buffer	In PBS (without Mg ²⁺ and Ca ²⁺), 150 mM NaCl, pH 7.4 (50% glycerol, 0.02% sodium azide)
Storage Instruction	Store at -20°C. Aliquot to avoid repeated freezing and thawing.
Note	This product contains sodium azide: a POISONOUS AND HAZARDOUS SUBSTANCE which should be handled by trained staff only.

Applications

- Immunohistochemistry (Formalin/PFA-fixed paraffin-embedded sections)

Immunohistochemical analysis of paraffin-embedded human breast carcinoma tissue using JUNB (phospho S79) polyclonal antibody (Cat # PAB25247).

- Immunofluorescence

Immunofluorescence staining of methanol-fixed HeLa cells using JUNB (phospho S79) polyclonal antibody (Cat # PAB25247).

Gene Info — JUNB

Entrez GeneID	3726
Protein Accession#	P17275
Gene Name	JUNB
Gene Alias	AP-1
Gene Description	jun B proto-oncogene
Omim ID	165161
Gene Ontology	Hyperlink
Other Designations	activator protein 1

Disease

- [Alzheimer disease](#)
- [Cognition](#)