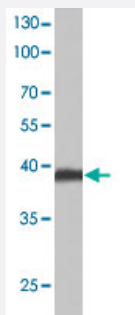


NCR1 polyclonal antibody

Catalog # PAB25220 Size 100 uL

Applications



Western Blot (Cell lysate)

Western blot analysis of 293A cell lysate with NCR1 polyclonal antibody (Cat # PAB25220) at 1:500 dilution.

Specification

Product Description	Rabbit polyclonal antibody raised against synthetic peptide of NCR1.
Immunogen	A synthetic peptide corresponding to NCR1.
Host	Rabbit
Theoretical MW (kDa)	~38.0
Reactivity	Human
Specificity	NCR1 polyclonal antibody detects endogenous levels of NCR1 protein.
Form	Liquid
Purification	Affinity purification
Recommend Usage	Western Blot (1:500-1:1000) Immunohistochemistry (1:50-1:200) The optimal working dilution should be determined by the end user.
Storage Buffer	In PBS, pH 7.2 (0.09% sodium azide)

Storage Instruction

Store at 4°C. For long term storage store at -20°C.
Aliquot to avoid repeated freezing and thawing.

Note

This product contains sodium azide: a POISONOUS AND HAZARDOUS SUBSTANCE which should be handled by trained staff only.

Applications

- Western Blot (Cell lysate)

Western blot analysis of 293A cell lysate with NCR1 polyclonal antibody (Cat # PAB25220) at 1:500 dilution.

Gene Info — NCR1

Entrez GeneID[9437](#)**Gene Name**

NCR1

Gene Alias

CD335, LY94, NK-p46, NKP46

Gene Description

natural cytotoxicity triggering receptor 1

Omim ID[604530](#)**Gene Ontology**[Hyperlink](#)**Other Designations**

lymphocyte antigen 94 homolog (activating NK-receptor; NK-p46)

Pathway

- [Natural killer cell mediated cytotoxicity](#)