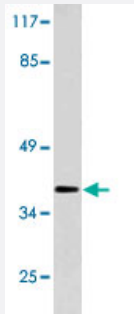


HOXB2 polyclonal antibody

Catalog # PAB25215 Size 100 uL

Applications



Western Blot (Cell lysate)

Western blot analysis of LoVo cell lysate with HOXB2 polyclonal antibody (Cat # PAB25215).

Specification

Product Description	Rabbit polyclonal antibody raised against synthetic peptide of HOXB2.
Immunogen	A synthetic peptide corresponding to HOXB2.
Host	Rabbit
Theoretical MW (kDa)	38
Reactivity	Human
Specificity	HOXB2 polyclonal antibody detects endogenous levels of HOXB2 protein.
Form	Liquid
Purification	Affinity purification
Concentration	1 mg/mL
Recommend Usage	Western Blot (1:500-1:1000) Immunohistochemistry (1:50-1:200) The optimal working dilution should be determined by the end user.
Storage Buffer	In PBS, pH 7.2 (0.05% sodium azide)

Storage Instruction

Store at 4°C. For long term storage store at -20°C.
Aliquot to avoid repeated freezing and thawing.

Note

This product contains sodium azide: a POISONOUS AND HAZARDOUS SUBSTANCE which should be handled by trained staff only.

Applications

- Western Blot (Cell lysate)

Western blot analysis of LoVo cell lysate with HOXB2 polyclonal antibody (Cat # PAB25215).

Gene Info — HOXB2

Entrez GeneID[3212](#)**Gene Name**

HOXB2

Gene Alias

HOX2, HOX2H, Hox-2.8, K8

Gene Description

homeobox B2

Omim ID[142967](#)**Gene Ontology**[Hyperlink](#)**Gene Summary**

This gene is a member of the Antp homeobox family and encodes a nuclear protein with a homeobox DNA-binding domain. It is included in a cluster of homeobox B genes located on chromosome 17. The encoded protein functions as a sequence-specific transcription factor that is involved in development. Increased expression of this gene is associated with pancreatic cancer. [provided by RefSeq]

Other Designations

K8 home protein|homeobox 2H|homeobox B2

Disease

- [Genetic Predisposition to Disease](#)
- [Ovarian Neoplasms](#)