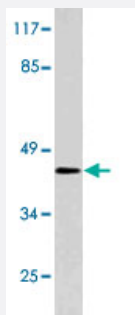


DHPS polyclonal antibody

Catalog # PAB25205 Size 100 uL

Applications



Western Blot (Cell lysate)

Western blot analysis of NIH/3T3 cell lysate with DHPS polyclonal antibody (Cat # PAB25205).

Specification

Product Description	Rabbit polyclonal antibody raised against synthetic peptide of DHPS.
Immunogen	A synthetic peptide corresponding to DHPS.
Host	Rabbit
Theoretical MW (kDa)	45
Reactivity	Human
Specificity	DHPS polyclonal antibody detects endogenous levels of DHPS protein.
Form	Liquid
Purification	Affinity purification
Concentration	1 mg/mL
Recommend Usage	Western Blot (1:500-1:1000) Immunohistochemistry (1:50-1:200) The optimal working dilution should be determined by the end user.
Storage Buffer	In PBS, pH 7.2 (0.05% sodium azide)

Storage Instruction

Store at 4°C. For long term storage store at -20°C.
Aliquot to avoid repeated freezing and thawing.

Note

This product contains sodium azide: a POISONOUS AND HAZARDOUS SUBSTANCE which should be handled by trained staff only.

Applications

- Western Blot (Cell lysate)

Western blot analysis of NIH/3T3 cell lysate with DHPS polyclonal antibody (Cat # PAB25205).

Gene Info — DHPS

Entrez GeneID[1725](#)**Gene Name**

DHPS

Gene Alias

MIG13

Gene Description

deoxyhypusine synthase

Omim ID[600944](#)**Gene Ontology**[Hyperlink](#)**Gene Summary**

The unusual amino acid hypusine is formed posttranslationally and is only found in a single cellular protein, eukaryotic translation initiation factor 5A. In the first step of hypusine biosynthesis, deoxyhypusine synthase catalyzes the NAD-dependent transfer of the butylamine moiety of spermidine to the epsilon-amino group of a specific lysine residue of the EIF5A precursor protein to form the intermediate deoxyhypusine residue. This gene consists of nine exons spanning 6.6 kb. Three transcript variants have been isolated. However, only transcript variant 1 encodes an active protein. The shorter variants may act as modulating factors of DHPS activity. [provided by RefSeq]

Other Designations

migration-inducing gene 13