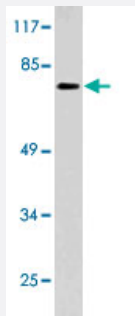


C1S polyclonal antibody

Catalog # PAB25200 Size 100 uL

Applications



Western Blot (Cell lysate)

Western blot analysis of Jurkat cell lysate with C1S polyclonal antibody (Cat # PAB25200).

Specification

Product Description Rabbit polyclonal antibody raised against synthetic peptide of C1S.

Immunogen A synthetic peptide corresponding to C1S.

Host Rabbit

Theoretical MW (kDa) 77

Reactivity Human

Specificity C1S polyclonal antibody detects endogenous levels of C1S protein.

Form Liquid

Purification Affinity purification

Concentration 1 mg/mL

Recommend Usage Western Blot (1:500-1:1000)
Immunohistochemistry (1:50-1:200)
The optimal working dilution should be determined by the end user.

Storage Buffer In PBS, pH 7.2 (0.05% sodium azide)

Storage Instruction

Store at 4°C. For long term storage store at -20°C.
Aliquot to avoid repeated freezing and thawing.

Note

This product contains sodium azide: a POISONOUS AND HAZARDOUS SUBSTANCE which should be handled by trained staff only.

Applications

- Western Blot (Cell lysate)

Western blot analysis of Jurkat cell lysate with C1S polyclonal antibody (Cat # PAB25200).

Gene Info — C1S

Entrez GeneID[716](#)**Gene Name**

C1S

Gene Alias

FLJ44757

Gene Description

complement component 1, s subcomponent

Omim ID[120580](#)**Gene Ontology**[Hyperlink](#)**Gene Summary**

This gene encodes a serine protease, which is a major constituent of the human complement sub component C1. C1s associates with two other complement components C1r and C1q in order to yield the first component of the serum complement system. Defects in this gene are the cause of selective C1s deficiency. [provided by RefSeq]

Other Designations

basic proline-rich peptide IB-1

Pathway

- [Complement and coagulation cascades](#)
- [Systemic lupus erythematosus](#)

Disease

- [Birth Weight](#)

- [Genetic Predisposition to Disease](#)
- [Glioblastoma](#)
- [Glioma](#)
- [Leukemia](#)
- [Lymphoma](#)
- [Meningeal Neoplasms](#)
- [Meningioma](#)