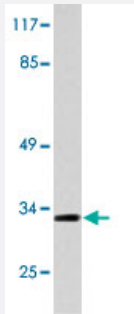


# PRSS3 polyclonal antibody

Catalog # PAB25192      Size 100 uL

## Applications



### Western Blot (Cell lysate)

Western blot analysis of A-549 cell lysate with PRSS3 polyclonal antibody (Cat # PAB25192).

## Specification

<b>Product Description</b>	Rabbit polyclonal antibody raised against synthetic peptide of PRSS3.
<b>Immunogen</b>	A synthetic peptide corresponding to PRSS3.
<b>Host</b>	Rabbit
<b>Theoretical MW (kDa)</b>	32
<b>Reactivity</b>	Human
<b>Specificity</b>	PRSS3 polyclonal antibody detects endogenous levels of PRSS3 protein.
<b>Form</b>	Liquid
<b>Purification</b>	Affinity purification
<b>Concentration</b>	1 mg/mL
<b>Recommend Usage</b>	Western Blot (1:500-1:1000) Immunohistochemistry (1:50-1:200) The optimal working dilution should be determined by the end user.
<b>Storage Buffer</b>	In PBS, pH 7.2 (0.05% sodium azide)

**Storage Instruction**

Store at 4°C. For long term storage store at -20°C.  
Aliquot to avoid repeated freezing and thawing.

**Note**

This product contains sodium azide: a POISONOUS AND HAZARDOUS SUBSTANCE which should be handled by trained staff only.

## Applications

- Western Blot (Cell lysate)

Western blot analysis of A-549 cell lysate with PRSS3 polyclonal antibody (Cat # PAB25192).

## Gene Info — PRSS3

**Entrez GeneID**[5646](#)**Gene Name**

PRSS3

**Gene Alias**

MTG, PRSS4, TRY3, TRY4

**Gene Description**

protease, serine, 3

**Gene Ontology**[Hyperlink](#)**Gene Summary**

This gene encodes a trypsinogen, which is a member of the trypsin family of serine proteases. This enzyme is expressed in the brain and pancreas and is resistant to common trypsin inhibitors. It is active on peptide linkages involving the carboxyl group of lysine or arginine. This gene is localized to the locus of T cell receptor beta variable orphans on chromosome 9. Two transcript variants encoding different isoforms have been described for this gene. [provided by RefSeq]

**Other Designations**

OTTHUMP00000045395|brain trypsinogen|mesotrypsin|mesotrypsinogen|pancreatic trypsinogen III|protease, serine, 4 (trypsin 4, brain)|trypsin 3|trypsinogen 4|trypsinogen 5|trypsinogen IV

## Pathway

- [Neuroactive ligand-receptor interaction](#)

## Disease

- [Chronic Disease](#)
- [Genetic Predisposition to Disease](#)

- [Pancreatitis](#)