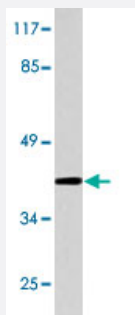


# Pepsin A polyclonal antibody

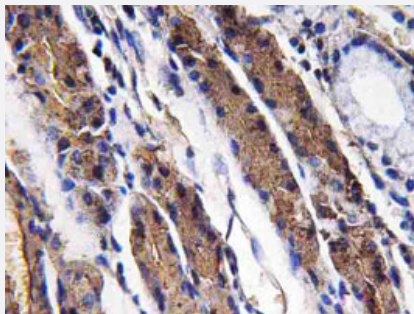
Catalog # PAB25189      Size 100 uL

## Applications



### Western Blot (Cell lysate)

Western blot analysis of K-562 cell lysate with Pepsin A polyclonal antibody (Cat # PAB25189).



### Immunohistochemistry (Formalin/PFA-fixed paraffin-embedded sections)

Immunohistochemical analysis of paraffin-embedded human lung cancer tissue using Pepsin A polyclonal antibody (Cat # PAB25189).

## Specification

<b>Product Description</b>	Rabbit polyclonal antibody raised against synthetic peptide of Pepsin A.
<b>Immunogen</b>	A synthetic peptide corresponding to Pepsin A.
<b>Host</b>	Rabbit
<b>Theoretical MW (kDa)</b>	42
<b>Reactivity</b>	Human
<b>Specificity</b>	Pepsin A polyclonal antibody detects endogenous levels of Pepsin A protein.
<b>Form</b>	Liquid

<b>Purification</b>	Affinity purification
<b>Concentration</b>	1 mg/mL
<b>Recommend Usage</b>	Western Blot (1:500-1:1000) Immunohistochemistry (1:50-1:200) The optimal working dilution should be determined by the end user.
<b>Storage Buffer</b>	In PBS, pH 7.2 (0.05% sodium azide)
<b>Storage Instruction</b>	Store at 4°C. For long term storage store at -20°C. Aliquot to avoid repeated freezing and thawing.
<b>Note</b>	This product contains sodium azide: a POISONOUS AND HAZARDOUS SUBSTANCE which should be handled by trained staff only.

## Applications

- Western Blot (Cell lysate)

Western blot analysis of K-562 cell lysate with Pepsin A polyclonal antibody (Cat # PAB25189).

- Immunohistochemistry (Formalin/PFA-fixed paraffin-embedded sections)

Immunohistochemical analysis of paraffin-embedded human lung cancer tissue using Pepsin A polyclonal antibody (Cat # PAB25189).