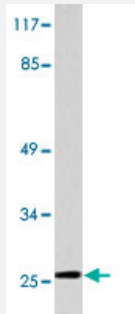


# IL32 polyclonal antibody

Catalog # PAB25184

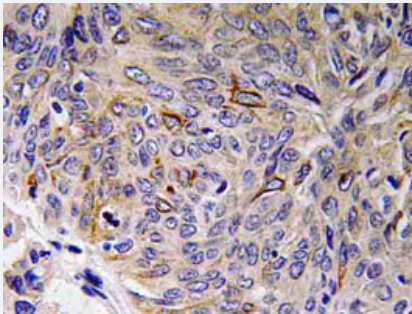
Size 100 uL

## Applications



### Western Blot (Cell lysate)

Western blot analysis of HepG2 cell lysate with IL32 polyclonal antibody (Cat # PAB25184).



### Immunohistochemistry (Formalin/PFA-fixed paraffin-embedded sections)

Immunohistochemical analysis of paraffin-embedded human lung cancer tissue using IL32 polyclonal antibody (Cat # PAB25184).

## Specification

<b>Product Description</b>	Rabbit polyclonal antibody raised against synthetic peptide of IL32.
<b>Immunogen</b>	A synthetic peptide corresponding to IL32.
<b>Host</b>	Rabbit
<b>Theoretical MW (kDa)</b>	27
<b>Reactivity</b>	Human
<b>Specificity</b>	IL32 polyclonal antibody detects endogenous levels of IL32 protein.
<b>Form</b>	Liquid

Purification	Affinity purification
Concentration	1 mg/mL
Recommend Usage	Western Blot (1:500-1:1000) Immunohistochemistry (1:50-1:200) The optimal working dilution should be determined by the end user.
Storage Buffer	In PBS, pH 7.2 (0.05% sodium azide)
Storage Instruction	Store at 4°C. For long term storage store at -20°C. Aliquot to avoid repeated freezing and thawing.
Note	This product contains sodium azide: a POISONOUS AND HAZARDOUS SUBSTANCE which should be handled by trained staff only.

## Applications

- Western Blot (Cell lysate)

Western blot analysis of HepG2 cell lysate with IL32 polyclonal antibody (Cat # PAB25184).

- Immunohistochemistry (Formalin/PFA-fixed paraffin-embedded sections)

Immunohistochemical analysis of paraffin-embedded human lung cancer tissue using IL32 polyclonal antibody (Cat # PAB25184).

## Gene Info — IL32

Entrez GeneID	<a href="#">9235</a>
Gene Name	IL32
Gene Alias	IL-32alpha, IL-32beta, IL-32delta, IL-32gamma, NK4, TAIF, TAIFa, TAIFb, TAIFc, TAIFd
Gene Description	interleukin 32
Omim ID	<a href="#">606001</a>
Gene Ontology	<a href="#">Hyperlink</a>
Gene Summary	This gene encodes a member of the cytokine family. The protein contains a tyrosine sulfation site, 3 potential N-myristoylation sites, multiple putative phosphorylation sites, and an RGD cell-attachment sequence. Expression of this protein is increased after the activation of T-cells by mitogens or the activation of NK cells by IL-2. This protein induces the production of TNFalpha from macrophage cells. Alternate transcriptional splice variants, encoding different isoforms, have been characterized. [provided by RefSeq]

**Other Designations**

natural killer cell transcript 4|natural killer cells protein 4|tumor necrosis factor alpha-inducing factor

---