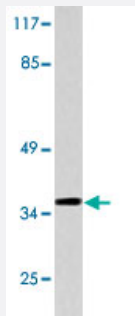


PAX1 polyclonal antibody

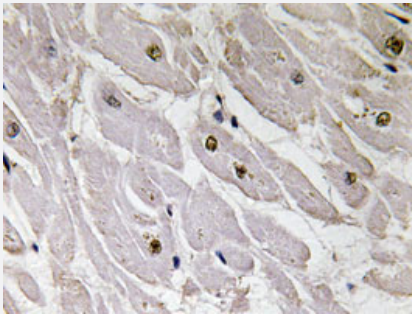
Catalog # PAB25163 Size 100 uL

Applications



Western Blot (Cell lysate)

Western blot analysis of HeLa cell lysate with PAX1 polyclonal antibody (Cat # PAB25163).



Immunohistochemistry (Formalin/PFA-fixed paraffin-embedded sections)

Immunohistochemical analysis of paraffin-embedded human heart tissue using PAX1 polyclonal antibody (Cat # PAB25163).

Specification

Product Description	Rabbit polyclonal antibody raised against synthetic peptide of PAX1.
Immunogen	A synthetic peptide corresponding to PAX1.
Host	Rabbit
Theoretical MW (kDa)	36
Reactivity	Human
Specificity	PAX1 polyclonal antibody detects endogenous levels of PAX1 protein.
Form	Liquid

Purification	Affinity purification
Concentration	1 mg/mL
Recommend Usage	Western Blot (1:500-1:1000) Immunohistochemistry (1:50-1:200) The optimal working dilution should be determined by the end user.
Storage Buffer	In PBS, pH 7.2 (0.05% sodium azide)
Storage Instruction	Store at 4°C. For long term storage store at -20°C. Aliquot to avoid repeated freezing and thawing.
Note	This product contains sodium azide: a POISONOUS AND HAZARDOUS SUBSTANCE which should be handled by trained staff only.

Applications

- Western Blot (Cell lysate)

Western blot analysis of HeLa cell lysate with PAX1 polyclonal antibody (Cat # PAB25163).

- Immunohistochemistry (Formalin/PFA-fixed paraffin-embedded sections)

Immunohistochemical analysis of paraffin-embedded human heart tissue using PAX1 polyclonal antibody (Cat # PAB25163).

Gene Info — PAX1

Entrez GeneID	5075
Gene Name	PAX1
Gene Alias	HUP48
Gene Description	paired box 1
Omim ID	167411
Gene Ontology	Hyperlink
Gene Summary	The PAX genes, including PAX1, are a highly conserved family of developmental control genes that encode transcription factors and have been shown to play a role in pattern formation during embryogenesis in vertebrates (McGaughran et al., 2003 [PubMed 12774041]). See PAX7 (MIM 167410) for a discussion of paired box domain genes.[supplied by OMIM]
Other Designations	OTTHUMP00000030407 paired box gene 1 paired domain gene HuP48

Disease

- [Scoliosis](#)