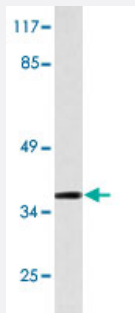


IgG1 polyclonal antibody

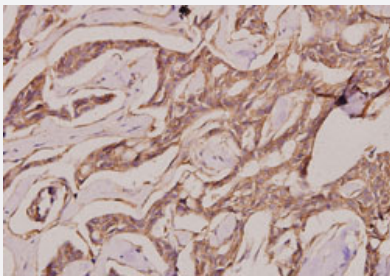
Catalog # PAB25147 Size 100 uL

Applications



Western Blot (Cell lysate)

Western blot analysis of LoVo cell lysate with IgG1 polyclonal antibody (Cat # PAB25147).



Immunohistochemistry (Formalin/PFA-fixed paraffin-embedded sections)

Immunohistochemical analysis of paraffin-embedded human breast cancer tissue using IgG1 polyclonal antibody (Cat # PAB25147).

Specification

Product Description	Rabbit polyclonal antibody raised against synthetic peptide of IgG1.
Immunogen	A synthetic peptide corresponding to amino acids 211-260 of human IgG1.
Host	Rabbit
Theoretical MW (kDa)	38
Reactivity	Human
Specificity	IgG1 polyclonal antibody detects endogenous levels of IgG1 protein.
Form	Liquid

Purification	Affinity purification
Concentration	1 mg/mL
Recommend Usage	Western Blot (1:500-1:1000) Immunohistochemistry (1:50-1:200) The optimal working dilution should be determined by the end user.
Storage Buffer	In PBS, pH 7.2 (0.05% sodium azide)
Storage Instruction	Store at 4°C. For long term storage store at -20°C. Aliquot to avoid repeated freezing and thawing.
Note	This product contains sodium azide: a POISONOUS AND HAZARDOUS SUBSTANCE which should be handled by trained staff only.

Applications

- Western Blot (Cell lysate)

Western blot analysis of LoVo cell lysate with IgG1 polyclonal antibody (Cat # PAB25147).

- Immunohistochemistry (Formalin/PFA-fixed paraffin-embedded sections)

Immunohistochemical analysis of paraffin-embedded human breast cancer tissue using IgG1 polyclonal antibody (Cat # PAB25147).