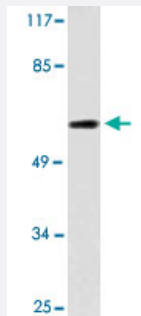


NEURL polyclonal antibody

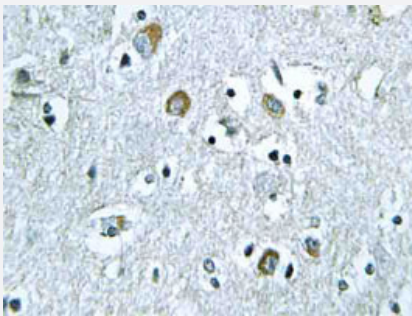
Catalog # PAB25139 Size 100 uL

Applications



Western Blot (Cell lysate)

Western blot analysis of MCF-7 cell lysate with NEURL polyclonal antibody (Cat # PAB25139).



Immunohistochemistry (Formalin/PFA-fixed paraffin-embedded sections)

Immunohistochemical analysis of paraffin-embedded human brain tissue using NEURL polyclonal antibody (Cat # PAB25139).

Specification

Product Description	Rabbit polyclonal antibody raised against synthetic peptide of NEURL.
Immunogen	A synthetic peptide corresponding to NEURL.
Host	Rabbit
Theoretical MW (kDa)	62
Reactivity	Human
Specificity	NEURL polyclonal antibody detects endogenous levels of NEURL protein.
Form	Liquid

Purification	Affinity purification
Concentration	1 mg/mL
Recommend Usage	Western Blot (1:500-1:1000) Immunohistochemistry (1:50-1:200) The optimal working dilution should be determined by the end user.
Storage Buffer	In PBS, pH 7.2 (0.05% sodium azide)
Storage Instruction	Store at 4°C. For long term storage store at -20°C. Aliquot to avoid repeated freezing and thawing.
Note	This product contains sodium azide: a POISONOUS AND HAZARDOUS SUBSTANCE which should be handled by trained staff only.

Applications

- Western Blot (Cell lysate)

Western blot analysis of MCF-7 cell lysate with NEURL polyclonal antibody (Cat # PAB25139).

- Immunohistochemistry (Formalin/PFA-fixed paraffin-embedded sections)

Immunohistochemical analysis of paraffin-embedded human brain tissue using NEURL polyclonal antibody (Cat # PAB25139).

Gene Info — NEURL

Entrez GeneID	9148
Gene Name	NEURL
Gene Alias	NEURL1, RNF67, h-neu, neu-1
Gene Description	neuralized homolog (Drosophila)
Omim ID	603804
Gene Ontology	Hyperlink
Other Designations	OTTHUMP00000020414 bA416N2.1 (neuralized neuralized-like

Disease

- [Alzheimer Disease](#)

- [Genetic Predisposition to Disease](#)