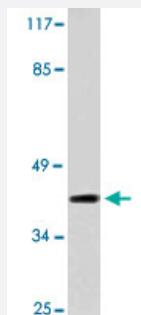


MRPS22 polyclonal antibody

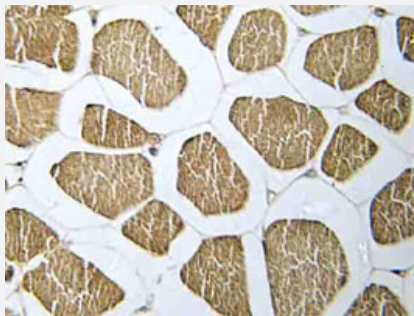
Catalog # PAB25134 Size 100 uL

Applications



Western Blot (Cell lysate)

Western blot analysis of COS-7 cell lysate with MRPS22 polyclonal antibody (Cat # PAB25134).



Immunohistochemistry (Formalin/PFA-fixed paraffin-embedded sections)

Immunohistochemical analysis of paraffin-embedded human skeletal muscle tissue using MRPS22 polyclonal antibody (Cat # PAB25134).

Specification

Product Description	Rabbit polyclonal antibody raised against synthetic peptide of MRPS22.
Immunogen	A synthetic peptide corresponding to MRPS22.
Host	Rabbit
Theoretical MW (kDa)	41
Reactivity	Human
Specificity	MRPS22 polyclonal antibody detects endogenous levels of MRPS22 protein.
Form	Liquid

Purification	Affinity purification
Concentration	1 mg/mL
Recommend Usage	Western Blot (1:500-1:1000) Immunohistochemistry (1:50-1:200) Immunofluorescence (1:50-1:200) The optimal working dilution should be determined by the end user.
Storage Buffer	In PBS, pH 7.2 (0.05% sodium azide)
Storage Instruction	Store at 4°C. For long term storage store at -20°C. Aliquot to avoid repeated freezing and thawing.
Note	This product contains sodium azide: a POISONOUS AND HAZARDOUS SUBSTANCE which should be handled by trained staff only.

Applications

- Western Blot (Cell lysate)

Western blot analysis of COS-7 cell lysate with MRPS22 polyclonal antibody (Cat # PAB25134).

- Immunohistochemistry (Formalin/PFA-fixed paraffin-embedded sections)

Immunohistochemical analysis of paraffin-embedded human skeletal muscle tissue using MRPS22 polyclonal antibody (Cat # PAB25134).

- Immunofluorescence

Gene Info — MRPS22

Entrez GeneID	56945
Gene Name	MRPS22
Gene Alias	C3orf5, COXPD5, GIBT, GK002, MRP-S22, RPMS22
Gene Description	mitochondrial ribosomal protein S22
Omim ID	605810
Gene Ontology	Hyperlink

Gene Summary

Mammalian mitochondrial ribosomal proteins are encoded by nuclear genes and help in protein synthesis within the mitochondrion. Mitochondrial ribosomes (mitoribosomes) consist of a small 28S subunit and a large 39S subunit. They have an estimated 75% protein to rRNA composition compared to prokaryotic ribosomes, where this ratio is reversed. Another difference between mammalian mitoribosomes and prokaryotic ribosomes is that the latter contain a 5S rRNA. Among different species, the proteins comprising the mitoribosome differ greatly in sequence, and sometimes in biochemical properties, which prevents easy recognition by sequence homology. This gene encodes a 28S subunit protein that does not seem to have a counterpart in prokaryotic and fungal -mitochondrial ribosomes. This gene lies telomeric of and is transcribed in the opposite direction from the forkhead box L2 gene. A pseudogene corresponding to this gene is found on chromosome Xq. [provided by RefSeq]

Other Designations

-