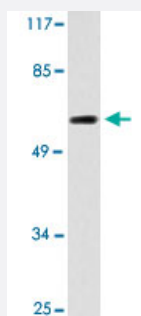


# CLCC1 polyclonal antibody

Catalog # PAB25130      Size 100 uL

## Applications



### Western Blot (Cell lysate)

Western blot analysis of Raw 264.7 cell lysate with CLCC1 polyclonal antibody (Cat # PAB25130).

## Specification

<b>Product Description</b>	Rabbit polyclonal antibody raised against synthetic peptide of CLCC1.
<b>Immunogen</b>	A synthetic peptide corresponding to CLCC1.
<b>Host</b>	Rabbit
<b>Theoretical MW (kDa)</b>	62
<b>Reactivity</b>	Human
<b>Specificity</b>	CLCC1 polyclonal antibody detects endogenous levels of CLCC1 protein.
<b>Form</b>	Liquid
<b>Purification</b>	Affinity purification
<b>Concentration</b>	1 mg/mL
<b>Recommend Usage</b>	Western Blot (1:500-1:1000) Immunofluorescence (1:50-1:200) The optimal working dilution should be determined by the end user.
<b>Storage Buffer</b>	In PBS, pH 7.2 (0.05% sodium azide)

**Storage Instruction**

Store at 4°C. For long term storage store at -20°C.  
Aliquot to avoid repeated freezing and thawing.

**Note**

This product contains sodium azide: a POISONOUS AND HAZARDOUS SUBSTANCE which should be handled by trained staff only.

## Applications

- Western Blot (Cell lysate)

Western blot analysis of Raw 264.7 cell lysate with CLCC1 polyclonal antibody (Cat # PAB25130).

- Immunofluorescence

## Gene Info — CLCC1

**Entrez GeneID** [23155](#)

**Gene Name** CLCC1

**Gene Alias** KIAA0761, MCLC

**Gene Description** chloride channel CLIC-like 1

**Gene Ontology** [Hyperlink](#)

**Other Designations** Mid-1-related chloride channel 1|Mid1-related chloride channel|OTTHUMP00000013438

## Disease

- [Diabetes Mellitus](#)
- [Genetic Predisposition to Disease](#)