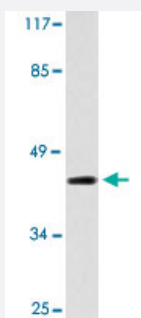


OXER1 polyclonal antibody

Catalog # PAB25126 Size 100 uL

Applications



Western Blot (Cell lysate)

Western blot analysis of MCF-7 cell lysate with OXER1 polyclonal antibody (Cat # PAB25126).

Specification

Product Description	Rabbit polyclonal antibody raised against synthetic peptide of OXER1.
Immunogen	A synthetic peptide corresponding to OXER1.
Host	Rabbit
Theoretical MW (kDa)	46
Reactivity	Human
Specificity	OXER1 polyclonal antibody detects endogenous levels of OXER1 protein.
Form	Liquid
Purification	Affinity purification
Concentration	1 mg/mL
Recommend Usage	Western Blot (1:500-1:1000) Immunohistochemistry (1:50-1:200) Immunofluorescence (1:50-1:200) The optimal working dilution should be determined by the end user.

Storage Buffer	In PBS, pH 7.2 (0.05% sodium azide)
Storage Instruction	Store at 4°C. For long term storage store at -20°C. Aliquot to avoid repeated freezing and thawing.
Note	This product contains sodium azide: a POISONOUS AND HAZARDOUS SUBSTANCE which should be handled by trained staff only.

Applications

- Western Blot (Cell lysate)

Western blot analysis of MCF-7 cell lysate with OXER1 polyclonal antibody (Cat # PAB25126).

- Immunohistochemistry

- Immunofluorescence

Gene Info — OXER1

Entrez GeneID	165140
Gene Name	OXER1
Gene Alias	GPCR, GPR170, TG1019
Gene Description	oxoeicosanoid (OXE) receptor 1
Gene Ontology	Hyperlink
Other Designations	5-oxo-ETE acid G-protein-coupled receptor 1 G-protein coupled receptor TG1019 OTTHUMP00000158809