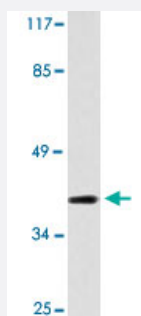


SERBP1 polyclonal antibody

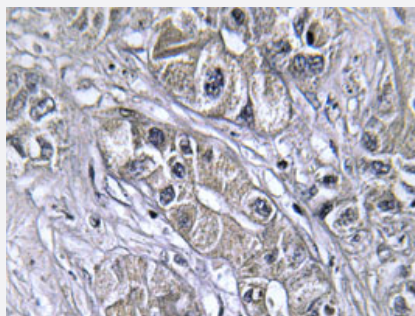
Catalog # PAB25113 Size 100 uL

Applications



Western Blot (Cell lysate)

Western blot analysis of Jurkat cell lysate with SERBP1 polyclonal antibody (Cat # PAB25113).



Immunohistochemistry (Formalin/PFA-fixed paraffin-embedded sections)

Immunohistochemical analysis of paraffin-embedded human liver carcinoma tissue using SERBP1 polyclonal antibody (Cat # PAB25113).

Specification

Product Description	Rabbit polyclonal antibody raised against synthetic peptide of SERBP1.
Immunogen	A synthetic peptide corresponding to SERBP1.
Host	Rabbit
Theoretical MW (kDa)	42
Reactivity	Human
Specificity	SERBP1 polyclonal antibody detects endogenous levels of SERBP1 protein.
Form	Liquid

Purification	Affinity purification
Concentration	1 mg/mL
Recommend Usage	Western Blot (1:500-1:1000) Immunohistochemistry (1:50-1:200) The optimal working dilution should be determined by the end user.
Storage Buffer	In PBS, pH 7.2 (0.05% sodium azide)
Storage Instruction	Store at 4°C. For long term storage store at -20°C. Aliquot to avoid repeated freezing and thawing.
Note	This product contains sodium azide: a POISONOUS AND HAZARDOUS SUBSTANCE which should be handled by trained staff only.

Applications

- Western Blot (Cell lysate)

Western blot analysis of Jurkat cell lysate with SERBP1 polyclonal antibody (Cat # PAB25113).

- Immunohistochemistry (Formalin/PFA-fixed paraffin-embedded sections)

Immunohistochemical analysis of paraffin-embedded human liver carcinoma tissue using SERBP1 polyclonal antibody (Cat # PAB25113).

Gene Info — SERBP1

Entrez GeneID	26135
Gene Name	SERBP1
Gene Alias	CGI-55, CHD3IP, DKFZp564M2423, FLJ90489, HABP4L, PAI-RBP1, PAIRBP1
Gene Description	SERPINE1 mRNA binding protein 1
Omim ID	607378
Gene Ontology	Hyperlink
Other Designations	OTTHUMP00000010977 OTTHUMP00000010978 OTTHUMP00000037681 OTTHUMP00000037682 PAI-1 mRNA binding protein chromodomain helicase DNA binding protein 3 interacting protein plasminogen activator inhibitor 1 RNA binding protein