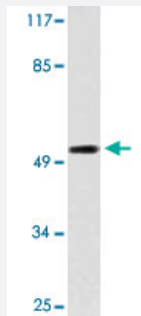


# LILRA1 polyclonal antibody

Catalog # PAB25109      Size 100 uL

## Applications



### Western Blot (Cell lysate)

Western blot analysis of MCF-7 cell lysate with LILRA1 polyclonal antibody (Cat # PAB25109).

## Specification

<b>Product Description</b>	Rabbit polyclonal antibody raised against synthetic peptide of LILRA1.
<b>Immunogen</b>	A synthetic peptide corresponding to LILRA1.
<b>Host</b>	Rabbit
<b>Theoretical MW (kDa)</b>	53
<b>Reactivity</b>	Human
<b>Specificity</b>	LILRA1 polyclonal antibody detects endogenous levels of LILRA1 protein.
<b>Form</b>	Liquid
<b>Purification</b>	Affinity purification
<b>Concentration</b>	1 mg/mL
<b>Recommend Usage</b>	Western Blot (1:500-1:1000) Immunofluorescence (1:50-1:200) The optimal working dilution should be determined by the end user.
<b>Storage Buffer</b>	In PBS, pH 7.2 (0.05% sodium azide)

**Storage Instruction**

Store at 4°C. For long term storage store at -20°C.  
Aliquot to avoid repeated freezing and thawing.

**Note**

This product contains sodium azide: a POISONOUS AND HAZARDOUS SUBSTANCE which should be handled by trained staff only.

## Applications

- Western Blot (Cell lysate)

Western blot analysis of MCF-7 cell lysate with LILRA1 polyclonal antibody (Cat # PAB25109).

- Immunofluorescence

## Gene Info — LILRA1

**Entrez GeneID** [11024](#)

**Gene Name** LILRA1

**Gene Alias** CD85I, LIR-6, LIR6, MGC126563

**Gene Description** leukocyte immunoglobulin-like receptor, subfamily A (with TM domain), member 1

**Omim ID** [604810](#)

**Gene Ontology** [Hyperlink](#)

**Gene Summary** subfamily A (with TM domain)

**Other Designations** OTTHUMP00000068393|leukocyte immunoglobulin-like receptor 6|leukocyte immunoglobulin-like receptor subfamily A member 1 soluble isoform

## Disease

- [Hepatitis C](#)