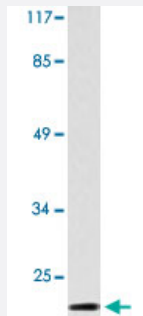


INSL4 polyclonal antibody

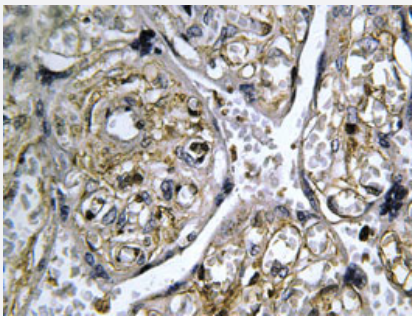
Catalog # PAB25105 Size 100 uL

Applications



Western Blot (Cell lysate)

Western blot analysis of HT-29 cell lysate with INSL4 polyclonal antibody (Cat # PAB25105).



Immunohistochemistry (Formalin/PFA-fixed paraffin-embedded sections)

Immunohistochemical analysis of paraffin-embedded human placenta tissue using INSL4 polyclonal antibody (Cat # PAB25105).

Specification

Product Description	Rabbit polyclonal antibody raised against synthetic peptide of INSL4.
Immunogen	A synthetic peptide corresponding to INSL4.
Host	Rabbit
Theoretical MW (kDa)	19
Reactivity	Human
Specificity	INSL4 polyclonal antibody detects endogenous levels of INSL4 protein.
Form	Liquid

Purification	Affinity purification
Concentration	1 mg/mL
Recommend Usage	Western Blot (1:500-1:1000) Immunohistochemistry (1:50-1:200) Immunofluorescence (1:50-1:200) The optimal working dilution should be determined by the end user.
Storage Buffer	In PBS, pH 7.2 (0.05% sodium azide)
Storage Instruction	Store at 4°C. For long term storage store at -20°C. Aliquot to avoid repeated freezing and thawing.
Note	This product contains sodium azide: a POISONOUS AND HAZARDOUS SUBSTANCE which should be handled by trained staff only.

Applications

- Western Blot (Cell lysate)

Western blot analysis of HT-29 cell lysate with INSL4 polyclonal antibody (Cat # PAB25105).

- Immunohistochemistry (Formalin/PFA-fixed paraffin-embedded sections)

Immunohistochemical analysis of paraffin-embedded human placenta tissue using INSL4 polyclonal antibody (Cat # PAB25105).

- Immunofluorescence

Gene Info — INSL4

Entrez GeneID	3641
Gene Name	INSL4
Gene Alias	EPIL, PLACENTIN
Gene Description	insulin-like 4 (placenta)
Omim ID	600910
Gene Ontology	Hyperlink

Gene Summary

INSL4 encodes the insulin-like 4 protein, a member of the insulin superfamily. INSL4 encodes a precursor that undergoes post-translational cleavage to produce 3 polypeptide chains, A-C, that form tertiary structures composed of either all three chains, or just the A and B chains. Expression of INSL4 products occurs within the early placental cytotrophoblast and syncytiotrophoblast. [provided by RefSeq]

Other Designations

OTTHUMP00000021025|early placenta insulin-like peptide (EPIL)|insulin-like 4