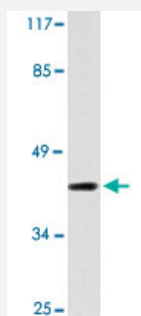


BMP8A polyclonal antibody

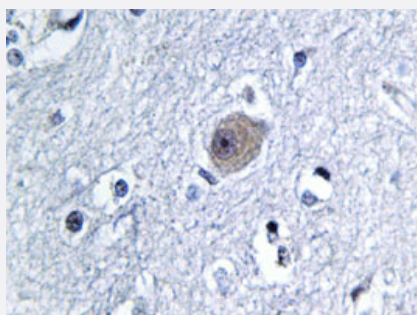
Catalog # PAB25100 Size 100 uL

Applications



Western Blot (Cell lysate)

Western blot analysis of COLO 205 cell lysate with BMP8A polyclonal antibody (Cat # PAB25100).



Immunohistochemistry (Formalin/PFA-fixed paraffin-embedded sections)

Immunohistochemical analysis of paraffin-embedded human brain tissue using BMP8A polyclonal antibody (Cat # PAB25100).

Specification

Product Description	Rabbit polyclonal antibody raised against synthetic peptide of BMP8A.
Immunogen	A synthetic peptide corresponding to BMP8A.
Host	Rabbit
Theoretical MW (kDa)	45
Reactivity	Human
Specificity	BMP8A polyclonal antibody detects endogenous levels of BMP8A protein.
Form	Liquid

Purification	Affinity purification
Concentration	1 mg/mL
Recommend Usage	Western Blot (1:500-1:1000) Immunohistochemistry (1:50-1:200) Immunofluorescence (1:50-1:200) The optimal working dilution should be determined by the end user.
Storage Buffer	In PBS, pH 7.2 (0.05% sodium azide)
Storage Instruction	Store at 4°C. For long term storage store at -20°C. Aliquot to avoid repeated freezing and thawing.
Note	This product contains sodium azide: a POISONOUS AND HAZARDOUS SUBSTANCE which should be handled by trained staff only.

Applications

- Western Blot (Cell lysate)

Western blot analysis of COLO 205 cell lysate with BMP8A polyclonal antibody (Cat # PAB25100).

- Immunohistochemistry (Formalin/PFA-fixed paraffin-embedded sections)

Immunohistochemical analysis of paraffin-embedded human brain tissue using BMP8A polyclonal antibody (Cat # PAB25100).

- Immunofluorescence

Gene Info — BMP8A

Entrez GeneID	353500
Gene Name	BMP8A
Gene Alias	FLJ14351, FLJ45264
Gene Description	bone morphogenetic protein 8a
Gene Ontology	Hyperlink
Other Designations	OTTHUMP00000010046 bone morphogenetic protein 8A

Pathway

- [Cytokine-cytokine receptor interaction](#)
- [Hedgehog signaling pathway](#)
- [TGF-beta signaling pathway](#)

Disease

- [Genetic Predisposition to Disease](#)
- [Hyperparathyroidism](#)