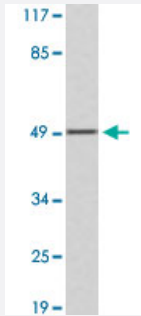


# FGL2 polyclonal antibody

Catalog # PAB25089      Size 100 uL

## Applications



### Western Blot (Cell lysate)

Western blot analysis of 293 cell lysate treated with insulin with FGL2 polyclonal antibody (Cat # PAB25089).

## Specification

<b>Product Description</b>	Rabbit polyclonal antibody raised against synthetic peptide of FGL2.
<b>Immunogen</b>	A synthetic peptide corresponding to amino acids 6-60 of human FGL2.
<b>Host</b>	Rabbit
<b>Theoretical MW (kDa)</b>	50
<b>Reactivity</b>	Human
<b>Specificity</b>	FGL2 polyclonal antibody detects endogenous levels of FGL2 protein.
<b>Form</b>	Liquid
<b>Purification</b>	Affinity purification
<b>Concentration</b>	1 mg/mL
<b>Recommend Usage</b>	Western Blot (1:500-1:1000) The optimal working dilution should be determined by the end user.
<b>Storage Buffer</b>	In PBS, pH 7.2 (0.05% sodium azide)

**Storage Instruction**

Store at 4°C. For long term storage store at -20°C.  
Aliquot to avoid repeated freezing and thawing.

**Note**

This product contains sodium azide: a POISONOUS AND HAZARDOUS SUBSTANCE which should be handled by trained staff only.

## Applications

- Western Blot (Cell lysate)

Western blot analysis of 293 cell lysate treated with insulin with FGL2 polyclonal antibody (Cat # PAB25089).

## Gene Info — FGL2

**Entrez GeneID**[10875](#)**Protein Accession#**[Q14314](#)**Gene Name**

FGL2

**Gene Alias**

T49, pT49

**Gene Description**

fibrinogen-like 2

**Omim ID**[605351](#)**Gene Ontology**[Hyperlink](#)**Gene Summary**

The protein encoded by this gene is a secreted protein that is similar to the beta- and gamma-chains of fibrinogen. The carboxyl-terminus of the encoded protein consists of the fibrinogen-related domains (FRED). The encoded protein forms a tetrameric complex which is stabilized by interchain disulfide bonds. This protein may play a role in physiologic functions at mucosal sites. [provided by RefSeq]

**Other Designations**

fibrinogen-like protein 2|fibroleukin

## Publication Reference

- [Regulatory T cells induce polarization of pro-repair macrophages by secreting sFGL2 into the endometriotic milieu.](#)

Xin-Xin Hou, Xiao-Qiu Wang, Wen-Jie Zhou, Da-Jin Li.

Communications Biology 2021 Apr; 4(1):499.

Application: IHC-P, Human, Human endometrium and ectopic lesions

## Disease

- [Genetic Predisposition to Disease](#)
- [Periodontitis](#)
- [Severe Acute Respiratory Syndrome](#)