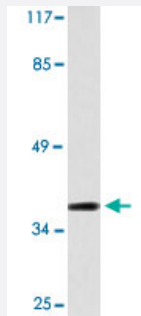


# TAS2R49 polyclonal antibody

Catalog # PAB25086      Size 100 uL

## Applications



### Western Blot (Cell lysate)

Western blot analysis of HepG2 cell lysate with TAS2R49 polyclonal antibody (Cat # PAB25086).

## Specification

<b>Product Description</b>	Rabbit polyclonal antibody raised against synthetic peptide of TAS2R49.
<b>Immunogen</b>	A synthetic peptide corresponding to TAS2R49.
<b>Host</b>	Rabbit
<b>Theoretical MW (kDa)</b>	38
<b>Reactivity</b>	Human
<b>Specificity</b>	TAS2R49 polyclonal antibody detects endogenous levels of TAS2R49 protein.
<b>Form</b>	Liquid
<b>Purification</b>	Affinity purification
<b>Concentration</b>	1 mg/mL
<b>Recommend Usage</b>	Western Blot (1:500-1:1000) The optimal working dilution should be determined by the end user.
<b>Storage Buffer</b>	In PBS, pH 7.2 (0.05% sodium azide)

**Storage Instruction**

Store at 4°C. For long term storage store at -20°C.  
Aliquot to avoid repeated freezing and thawing.

**Note**

This product contains sodium azide: a POISONOUS AND HAZARDOUS SUBSTANCE which should be handled by trained staff only.

## Applications

- Western Blot (Cell lysate)

Western blot analysis of HepG2 cell lysate with TAS2R49 polyclonal antibody (Cat # PAB25086).

- Immunofluorescence

## Gene Info — TAS2R49

**Entrez GeneID**[259295](#)**Gene Name**

TAS2R49

**Gene Alias**

MGC119118, MGC119119, MGC119120, MGC119121, MGC134637, T2R49, T2R56

**Gene Description**

taste receptor, type 2, member 49

**Gene Ontology**[Hyperlink](#)**Gene Summary**

type 2

**Other Designations**

-

## Pathway

- [Taste transduction](#)