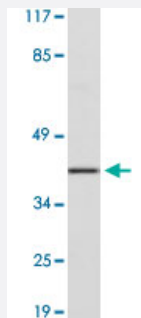


# STEAP1 polyclonal antibody

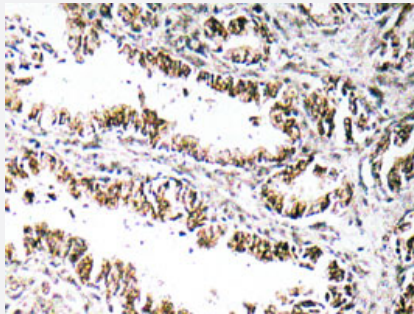
Catalog # PAB25081      Size 100 uL

## Applications



### Western Blot (Cell lysate)

Western blot analysis of A-549 cell lysate with STEAP1 polyclonal antibody (Cat # PAB25081).



### Immunohistochemistry (Formalin/PFA-fixed paraffin-embedded sections)

Immunohistochemical analysis of paraffin-embedded human prostate cancer tissue using STEAP1 polyclonal antibody (Cat # PAB25081).

## Specification

<b>Product Description</b>	Rabbit polyclonal antibody raised against synthetic peptide of STEAP1.
<b>Immunogen</b>	A synthetic peptide corresponding to STEAP1.
<b>Host</b>	Rabbit
<b>Theoretical MW (kDa)</b>	40
<b>Reactivity</b>	Human
<b>Specificity</b>	STEAP1 polyclonal antibody detects endogenous levels of STEAP1 protein.
<b>Form</b>	Liquid

Purification	Affinity purification
Concentration	1 mg/mL
Recommend Usage	Western Blot (1:500-1:1000) Immunohistochemistry (1:50-1:200) The optimal working dilution should be determined by the end user.
Storage Buffer	In PBS, pH 7.2 (0.05% sodium azide)
Storage Instruction	Store at 4°C. For long term storage store at -20°C. Aliquot to avoid repeated freezing and thawing.
Note	This product contains sodium azide: a POISONOUS AND HAZARDOUS SUBSTANCE which should be handled by trained staff only.

## Applications

- Western Blot (Cell lysate)

Western blot analysis of A-549 cell lysate with STEAP1 polyclonal antibody (Cat # PAB25081).

- Immunohistochemistry (Formalin/PFA-fixed paraffin-embedded sections)

Immunohistochemical analysis of paraffin-embedded human prostate cancer tissue using STEAP1 polyclonal antibody (Cat # PAB25081).

## Gene Info — STEAP1

Entrez GeneID	<a href="#">26872</a>
Gene Name	STEAP1
Gene Alias	MGC19484, PRSS24, STEAP
Gene Description	six transmembrane epithelial antigen of the prostate 1
Omim ID	<a href="#">604415</a>
Gene Ontology	<a href="#">Hyperlink</a>
Gene Summary	This gene is predominantly expressed in prostate tissue, and is found to be upregulated in multiple cancer cell lines. The gene product is predicted to be a six-transmembrane protein, and was shown to be a cell surface antigen significantly expressed at cell-cell junctions. [provided by RefSeq]
Other Designations	six transmembrane epithelial antigen of the prostate

## Disease

- [Breast cancer](#)
- [Breast Neoplasms](#)
- [Genetic Predisposition to Disease](#)
- [Ovarian Neoplasms](#)