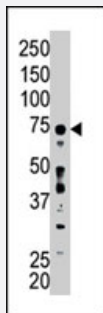


ACSL6 polyclonal antibody

Catalog # PAB2506

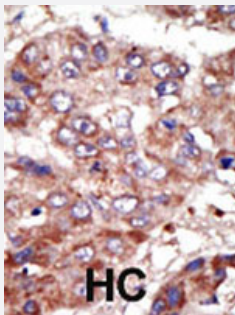
Size 400 uL

Applications



Western Blot (Tissue lysate)

The ACSL6 polyclonal antibody (Cat # PAB2506) is used in Western blot to detect ACSL6 in mouse liver tissue lysate.



Immunohistochemistry (Formalin/PFA-fixed paraffin-embedded sections)

Formalin-fixed and paraffin-embedded human hepatocellular carcinoma tissue reacted with the ACSL6 polyclonal antibody (Cat # PAB2506), which was peroxidase-conjugated to the secondary antibody, followed by AEC staining. This data demonstrates the use of this antibody for immunohistochemistry; clinical relevance has not been evaluated. HC = hepatocarcinoma.

Specification

Product Description	Rabbit polyclonal antibody raised against synthetic peptide of ACSL6.
Immunogen	A synthetic peptide (conjugated with KLH) corresponding to internal region of human ACSL6.
Host	Rabbit
Reactivity	Human, Mouse
Form	Liquid
Purification	Protein G purification

Recommend Usage	Western Blot (1:1000) Immunohistochemistry (1:50-100) The optimal working dilution should be determined by the end user.
Storage Buffer	In PBS (0.09% sodium azide)
Storage Instruction	Store at 4°C. For long term storage store at -20°C. Aliquot to avoid repeated freezing and thawing.
Note	This product contains sodium azide: a POISONOUS AND HAZARDOUS SUBSTANCE which should be handled by trained staff only.

Applications

- Western Blot (Tissue lysate)

The ACSL6 polyclonal antibody (Cat # PAB2506) is used in Western blot to detect ACSL6 in mouse liver tissue lysate.

- Immunohistochemistry (Formalin/PFA-fixed paraffin-embedded sections)

Formalin-fixed and paraffin-embedded human hepatocellular carcinoma tissue reacted with the ACSL6 polyclonal antibody (Cat # PAB2506), which was peroxidase-conjugated to the secondary antibody, followed by AEC staining. This data demonstrates the use of this antibody for immunohistochemistry; clinical relevance has not been evaluated. HC = hepatocarcinoma.

Gene Info — ACSL6

Entrez GeneID	23305
Protein Accession#	ACSL6_HUMAN
Gene Name	ACSL6
Gene Alias	ACS2, FACL6, FLJ16173, KIAA0837, LACS2, LACS5
Gene Description	acyl-CoA synthetase long-chain family member 6
Omim ID	604443
Gene Ontology	Hyperlink
Gene Summary	Long-chain acyl-CoA synthetases (EC 6.2.1.3), such as ACSL6, catalyze the formation of acyl-CoA from fatty acids, ATP, and CoA (Malhotra et al., 1999 [PubMed 10548543]).[supplied by OMIM]
Other Designations	fatty-acid-Coenzyme A ligase, long-chain 6 long fatty acyl-CoA synthetase 2 long-chain acyl-CoA synthetase 6

Publication Reference

- [ACSL3 and GSK-3 \$\beta\$ are essential for lipid upregulation induced by endoplasmic reticulum stress in liver cells.](#)
Chang YS, Tsai CT, Huangfu CA, Huang WY, Lei HY, Lin CF, Su IJ, Chang WT, Wu PH, Chen YT, Hung JH, Young KC, Lai MD.
Journal of Cellular Biochemistry 2011 Mar; 112(3):881.

Application: WB-Ce, Human, HepG2, Huh-7 cells
- [Fusion of TEL/ETV6 to a novel ACS2 in myelodysplastic syndrome and acute myelogenous leukemia with t\(5;12\)\(q31;p13\).](#)
Yagasaki F, Jinnai I, Yoshida S, Yokoyama Y, Matsuda A, Kusumoto S, Kobayashi H, Terasaki H, Ohyashiki K, Asou N, Murohashi I, Bessho M, Hirashima K.
Genes, Chromosomes & Cancer 1999 Nov; 26(3):192.
- [Identification and molecular characterization of acyl-CoA synthetase in human erythrocytes and erythroid precursors.](#)
Malhotra KT, Malhotra K, Lubin BH, Kuypers FA.
The Biochemical Journal 1999 Nov; 344 Pt 1:135.

Application: WB, Human, Human erythrocytes
- [Prediction of the coding sequences of unidentified human genes. XII. The complete sequences of 100 new cDNA clones from brain which code for large proteins in vitro.](#)
T Nagase, K Ishikawa, M Suyama, R Kikuno, M Hirosawa, N Miyajima, A Tanaka, H Kotani, N Nomura, O Ohara.
DNA Research 1998 Dec; 5(6):355.

Pathway

- [Adipocytokine signaling pathway](#)
- [Fatty acid metabolism](#)
- [Metabolic pathways](#)
- [PPAR signaling pathway](#)

Disease

- [Genetic Predisposition to Disease](#)

- [Ovarian Failure](#)
- [Prostatic Neoplasms](#)
- [Schizophrenia](#)
- [Tobacco Use Disorder](#)