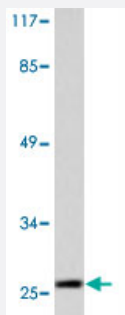


HSPB1 (phospho S15) polyclonal antibody

Catalog # PAB25040

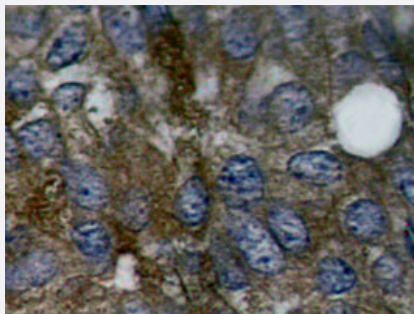
Size 100 uL

Applications



Western Blot (Cell lysate)

Western blot analysis of 293 cells treated with UV with HSPB1 (phospho S15) polyclonal antibody (Cat # PAB25040).



Immunohistochemistry (Formalin/PFA-fixed paraffin-embedded sections)

Immunohistochemistry analysis of paraffin-embedded human lung carcinoma tissue with HSPB1 (phospho S15) polyclonal antibody (Cat # PAB25040).

Specification

Product Description	Rabbit polyclonal antibody raised against synthetic phosphopeptide of HSPB1.
Immunogen	Synthetic phosphopeptide corresponding to residues surrounding S15 of HSPB1.
Host	Rabbit
Theoretical MW (kDa)	26
Reactivity	Human
Form	Liquid
Purification	Antigen affinity purification

Concentration	1 mg/mL
Purity	> 95% by SDS-PAGE
Recommend Usage	Western Blot (1:500-1:1000) Immunohistochemistry (1:50-1:200) The optimal working dilution should be determined by the end user.
Storage Buffer	In PBS, pH 7.2 (0.05% sodium azide)
Storage Instruction	Store at 4°C. For long term storage store at -20°C. Aliquot to avoid repeated freezing and thawing.
Note	This product contains sodium azide: a POISONOUS AND HAZARDOUS SUBSTANCE which should be handled by trained staff only.

Applications

- Western Blot (Cell lysate)

Western blot analysis of 293 cells treated with UV with HSPB1 (phospho S15) polyclonal antibody (Cat # PAB25040).

- Immunohistochemistry (Formalin/PFA-fixed paraffin-embedded sections)

Immunohistochemistry analysis of paraffin-embedded human lung carcinoma tissue with HSPB1 (phospho S15) polyclonal antibody (Cat # PAB25040).

Gene Info — HSPB1

Entrez GeneID	3315
Gene Name	HSPB1
Gene Alias	CMT2F, DKFZp586P1322, HMN2B, HS.76067, HSP27, HSP28, Hsp25, SRP27
Gene Description	heat shock 27kDa protein 1
Omim ID	602195 606595 608634
Gene Ontology	Hyperlink
Gene Summary	The protein encoded by this gene is induced by environmental stress and developmental changes. The encoded protein is involved in stress resistance and actin organization and translocates from the cytoplasm to the nucleus upon stress induction. Defects in this gene are a cause of Charcot-Marie-Tooth disease type 2F (CMT2F) and distal hereditary motor neuropathy (dHMN). [provided by RefSeq]

Other Designations

OTTHUMP00000024846|estrogen-regulated 24 kDa protein|heat shock 27kD protein 1|heat shock protein beta-1|stress-responsive protein 27

Pathway

- [MAPK signaling pathway](#)
- [VEGF signaling pathway](#)

Disease

- [Adenocarcinoma](#)
- [Carcinoma](#)
- [Charcot-Marie-Tooth Disease](#)
- [Diabetic Nephropathies](#)
- [Genetic Predisposition to Disease](#)
- [Lung Neoplasms](#)
- [Small Cell Lung Carcinoma](#)