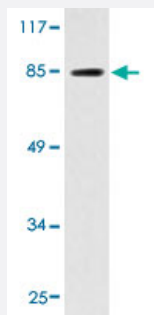


EMR2 polyclonal antibody

Catalog # PAB25011 Size 100 uL

Applications



Western Blot (Cell lysate)

Western blot analysis of COLO 205 cell extracts with EMR2 polyclonal antibody (Cat # PAB25011).

Specification

Product Description	Rabbit polyclonal antibody raised against synthetic peptide of EMR2.
Immunogen	A synthetic peptide corresponding to EMR2.
Host	Rabbit
Theoretical MW (kDa)	85
Reactivity	Human
Specificity	EMR2 polyclonal antibody detects endogenous levels of EMR2.
Form	Liquid
Purification	Antigen affinity purification
Concentration	1 mg/mL
Recommend Usage	Western Blot (1:500-1:1000) Immunofluorescence (1:50-1:200) The optimal working dilution should be determined by the end user.
Storage Buffer	In PBS, pH 7.2 (0.05% sodium azide)

Storage Instruction

Store at 4°C. For long term storage store at -20°C.
Aliquot to avoid repeated freezing and thawing.

Note

This product contains sodium azide: a POISONOUS AND HAZARDOUS SUBSTANCE which should be handled by trained staff only.

Applications

- Western Blot (Cell lysate)

Western blot analysis of COLO 205 cell extracts with EMR2 polyclonal antibody (Cat # PAB25011).

- Immunofluorescence

Gene Info — EMR2

Entrez GeneID [30817](#)

Gene Name EMR2

Gene Alias CD312, DKFZp781B135

Gene Description egf-like module containing, mucin-like, hormone receptor-like 2

Omim ID [606100](#)

Gene Ontology [Hyperlink](#)

Gene Summary

This gene encodes a member of the class B seven-span transmembrane (TM7) receptor family expressed predominantly by cells of the immune system. Family members are characterized by an extended extracellular region with a variable number of N-terminal epidermal growth factor (EGF)-like domains coupled to a TM7 domain via a mucin-like spacer domain. This gene is closely linked to the gene encoding egf-like molecule containing mucin-like hormone receptor 3 on chromosome 19. This protein does not interact with the ligand decay accelerating factor for complement, unlike the related CD97 antigen, and indicates that these very closely related proteins likely have non-redundant functions. This gene results in multiple transcripts encoding distinct isoforms. [provided by RefSeq]

Other Designations egf-like module containing, mucin-like, hormone receptor-like sequence 2