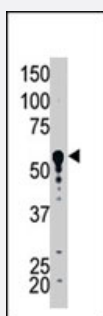


SPTLC1 polyclonal antibody

Catalog # PAB2501

Size 400 uL

Applications



Western Blot (Cell lysate)

The SPTLC1 polyclonal antibody (Cat # PAB2501) is used in Western blot to detect SPTLC1 in 293 cell lysate.

Specification

Product Description	Rabbit polyclonal antibody raised against synthetic peptide of SPTLC1.
Immunogen	A synthetic peptide (conjugated with KLH) corresponding to C-terminus of human SPTLC1.
Host	Rabbit
Reactivity	Human
Form	Liquid
Purification	Protein G purification
Recommend Usage	Western Blot (1:1000) The optimal working dilution should be determined by the end user.
Storage Buffer	In PBS (0.09% sodium azide)
Storage Instruction	Store at 4°C. For long term storage store at -20°C. Aliquot to avoid repeated freezing and thawing.
Note	This product contains sodium azide: a POISONOUS AND HAZARDOUS SUBSTANCE which should be handled by trained staff only.

Applications

- Western Blot (Cell lysate)

The SPTLC1 polyclonal antibody (Cat # PAB2501) is used in Western blot to detect SPTLC1 in 293 cell lysate.

Gene Info — SPTLC1

Entrez GeneID [10558](#)

Protein Accession# [LCB1_HUMAN](#)

Gene Name SPTLC1

Gene Alias HSAN, HSAN1, HSN1, LBC1, LCB1, MGC14645, SPT1, SPTI

Gene Description serine palmitoyltransferase, long chain base subunit 1

Omim ID [162400 605712](#)

Gene Ontology [Hyperlink](#)

Gene Summary Serine palmitoyltransferase, which consists of two different subunits, is the key enzyme in sphingo lipid biosynthesis. It converts L-serine and palmitoyl-CoA to 3-oxosphinganine with pyridoxal 5'-phosphate as a cofactor. The product of this gene is the long chain base subunit 1 of serine palmitoyltransferase. Mutations in this gene were identified in patients with hereditary sensory neuropathy type 1. Alternatively spliced variants encoding different isoforms have been identified. [provided by RefSeq]

Other Designations OTTHUMP00000022810|OTTHUMP00000022811|long chain base biosynthesis protein 1|serine C-palmitoyltransferase|serine palmitoyltransferase subunit 1|serine-palmitoyl-CoA transferase 1

Publication Reference

- [Serine palmitoyltransferase subunit 1 is present in the endoplasmic reticulum, nucleus and focal adhesions, and functions in cell morphology.](#)

Wei J, Yerokun T, Leipelt M, Haynes CA, Radhakrishna H, Momin A, Kelly S, Park H, Wang E, Carton JM, Uhlinger DJ, Merrill AH Jr.

Biochimica et Biophysica Acta 2009 Aug; 1791(8):746.

Application: WB-Ce, Human, HEK 293 cells

Pathway

- [Metabolic pathways](#)
- [Sphingolipid metabolism](#)

Disease

- [Cleft Lip](#)
- [Cleft Palate](#)
- [Hereditary Sensory and Autonomic Neuropathies](#)