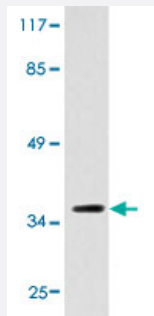


# RRH polyclonal antibody

Catalog # PAB25007      Size 100 uL

## Applications



### Western Blot (Cell lysate)

Western blot analysis of COLO 205 cell extracts with RRH polyclonal antibody (Cat # PAB25007).

## Specification

<b>Product Description</b>	Rabbit polyclonal antibody raised against synthetic peptide of RRH.
<b>Immunogen</b>	A synthetic peptide corresponding to RRH.
<b>Host</b>	Rabbit
<b>Theoretical MW (kDa)</b>	37
<b>Reactivity</b>	Human
<b>Specificity</b>	RRH polyclonal antibody detects endogenous levels of RRH.
<b>Form</b>	Liquid
<b>Purification</b>	Antigen affinity purification
<b>Concentration</b>	1 mg/mL
<b>Recommend Usage</b>	Western Blot (1:500-1:1000) The optimal working dilution should be determined by the end user.
<b>Storage Buffer</b>	In PBS, pH 7.2 (0.05% sodium azide)

**Storage Instruction**

Store at 4°C. For long term storage store at -20°C.  
Aliquot to avoid repeated freezing and thawing.

**Note**

This product contains sodium azide: a POISONOUS AND HAZARDOUS SUBSTANCE which should be handled by trained staff only.

## Applications

- Western Blot (Cell lysate)

Western blot analysis of COLO 205 cell extracts with RRH polyclonal antibody (Cat # PAB25007).

## Gene Info — RRH

**Entrez GeneID**[10692](#)**Gene Name**

RRH

**Gene Alias**

-

**Gene Description**

retinal pigment epithelium-derived rhodopsin homolog

**Omim ID**[605224](#)**Gene Ontology**[Hyperlink](#)**Gene Summary**

Opsins are members of the guanine nucleotide-binding protein (G protein)-coupled receptor superfamily. This gene belongs to the seven-exon subfamily of mammalian opsin genes that includes opsin 5 and retinal G protein coupled receptor. [provided by RefSeq]

**Other Designations**

peropsin|visual pigment-like receptor peropsin

## Disease

- [Alcoholism](#)
- [Genetic Predisposition to Disease](#)