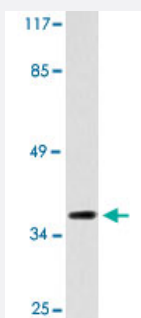


GPR119 polyclonal antibody

Catalog # PAB24982 Size 100 uL

Applications



Western Blot (Cell lysate)

Western blot analysis of K-562 cell lysate with GPR119 polyclonal antibody (Cat # PAB24982).

Specification

Product Description	Rabbit polyclonal antibody raised against synthetic peptide of GPR119.
Immunogen	A synthetic peptide corresponding to GPR119.
Host	Rabbit
Theoretical MW (kDa)	37
Reactivity	Human
Specificity	GPR119 polyclonal antibody detects endogenous levels of GPR119 protein.
Form	Liquid
Purification	Antigen affinity purification
Concentration	1 mg/mL
Recommend Usage	Western Blot (1:500-1:1000) Immunofluorescence (1:50-1:200) The optimal working dilution should be determined by the end user.
Storage Buffer	In PBS, pH 7.2 (0.05% sodium azide)

Storage Instruction

Store at 4°C. For long term storage store at -20°C.
Aliquot to avoid repeated freezing and thawing.

Note

This product contains sodium azide: a POISONOUS AND HAZARDOUS SUBSTANCE which should be handled by trained staff only.

Applications

- Western Blot (Cell lysate)

Western blot analysis of K-562 cell lysate with GPR119 polyclonal antibody (Cat # PAB24982).

- Immunofluorescence

Gene Info — GPR119

Entrez GeneID [139760](#)

Gene Name GPR119

Gene Alias GPCR2, MGC119957, hGPCR2

Gene Description G protein-coupled receptor 119

Omim ID [300513](#)

Gene Ontology [Hyperlink](#)

Gene Summary GPR119 is a member of the rhodopsin family of G protein-coupled receptors (GPRs) (Fredriksson et al., 2003 [PubMed 14623098]).[supplied by OMIM]

Other Designations G-protein coupled receptor 2|OTTHUMP00000024018