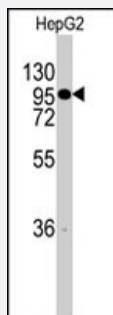


# CHRD polyclonal antibody

Catalog # PAB2498

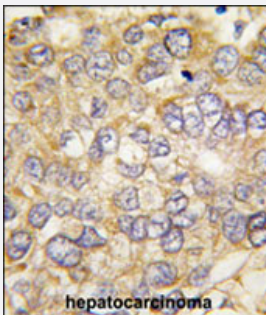
Size 400 uL

## Applications



### Western Blot (Cell lysate)

Western blot analysis of CHRD polyclonal antibody (Cat # PAB2498) in HepG2 cell line lysates (35 ug/lane). CHRD (arrow) was detected using the purified polyclonal antibody.



### Immunohistochemistry (Formalin/PFA-fixed paraffin-embedded sections)

Formalin-fixed and paraffin-embedded human hepatocellular carcinoma reacted with CHRD polyclonal antibody (Cat # PAB2498), which was peroxidase-conjugated to the secondary antibody, followed by DAB staining. This data demonstrates the use of this antibody for immunohistochemistry; clinical relevance has not been evaluated.

## Specification

<b>Product Description</b>	Rabbit polyclonal antibody raised against synthetic peptide of CHRD.
<b>Immunogen</b>	A synthetic peptide (conjugated with KLH) corresponding to C-terminus of human CHRD.
<b>Host</b>	Rabbit
<b>Reactivity</b>	Human
<b>Form</b>	Liquid
<b>Purification</b>	Protein A purification

<b>Recommend Usage</b>	Western Blot (1:1000) Immunohistochemistry (1:10-50) The optimal working dilution should be determined by the end user.
<b>Storage Buffer</b>	In PBS (0.09% sodium azide)
<b>Storage Instruction</b>	Store at 4°C. For long term storage store at -20°C. Aliquot to avoid repeated freezing and thawing.
<b>Note</b>	This product contains sodium azide: a POISONOUS AND HAZARDOUS SUBSTANCE which should be handled by trained staff only.

## Applications

- Western Blot (Cell lysate)

Western blot analysis of CHR D polyclonal antibody (Cat # PAB2498) in HepG2 cell line lysates (35 ug/lane). CHR D (arrow) was detected using the purified polyclonal antibody.

- Immunohistochemistry (Formalin/PFA-fixed paraffin-embedded sections)

Formalin-fixed and paraffin-embedded human hepatocellular carcinoma reacted with CHR D polyclonal antibody (Cat # PAB2498) , which was peroxidase-conjugated to the secondary antibody, followed by DAB staining. This data demonstrates the use of this antibody for immunohistochemistry ; clinical relevance has not been evaluated.

## Gene Info — CHR D

<b>Entrez GeneID</b>	<a href="#">8646</a>
<b>Protein Accession#</b>	<a href="#">NP_003732:Q9H2X0</a>
<b>Gene Name</b>	CHR D
<b>Gene Alias</b>	MGC133038
<b>Gene Description</b>	chordin
<b>Omim ID</b>	<a href="#">603475</a>
<b>Gene Ontology</b>	<a href="#">Hyperlink</a>
<b>Gene Summary</b>	This gene encodes a secreted protein that dorsalizes early vertebrate embryonic tissues by binding to ventralizing TGF-beta-like bone morphogenetic proteins and sequestering them in latent complexes. The encoded protein may also have roles in organogenesis and during adulthood. Multiple transcript variants encoding distinct isoforms have been identified for this gene. Other alternative splice variants have been described but their full length sequence has not been determined. [provided by RefSeq]

## Publication Reference

- [A protein-protein interaction network for human inherited ataxias and disorders of Purkinje cell degeneration.](#)

Lim J, Hao T, Shaw C, Patel AJ, Szabo G, Rual JF, Fisk CJ, Li N, Smolyar A, Hill DE, Barabasi AL, Vidal M, Zoghbi HY.

Cell 2006 May; 125(4):801.

- [Chordin is underexpressed in ovarian tumors and reduces tumor cell motility.](#)

Moll F, Millet C, Noel D, Orsetti B, Bardin A, Katsaros D, Jorgensen C, Garcia M, Theillet C, Pujol P, Francois V.

FASEB Journal 2006 Feb; 20(2):240.

## Pathway

- [TGF-beta signaling pathway](#)

## Disease

- [Cardiovascular Diseases](#)
- [Diabetes Mellitus](#)
- [Edema](#)
- [Kidney Failure](#)