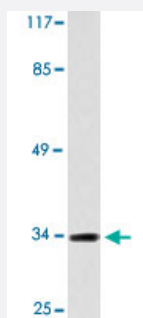


CCBP2 polyclonal antibody

Catalog # PAB24976 Size 100 uL

Applications



Western Blot (Cell lysate)

Western blot analysis of HepG2 cell lysate with CCBP2 polyclonal antibody (Cat # PAB24976).

Specification

Product Description	Rabbit polyclonal antibody raised against synthetic peptide of CCBP2.
Immunogen	A synthetic peptide corresponding to CCBP2.
Host	Rabbit
Theoretical MW (kDa)	34
Reactivity	Human
Specificity	CCBP2 polyclonal antibody detects endogenous levels of CCBP2 protein.
Form	Liquid
Purification	Antigen affinity purification
Concentration	1 mg/mL
Recommend Usage	Western Blot (1:500-1:1000) Immunohistochemistry (1:50-1:200) Immunofluorescence (1:50-1:200) The optimal working dilution should be determined by the end user.

Storage Buffer	In PBS, pH 7.2 (0.05% sodium azide)
Storage Instruction	Store at 4°C. For long term storage store at -20°C. Aliquot to avoid repeated freezing and thawing.
Note	This product contains sodium azide: a POISONOUS AND HAZARDOUS SUBSTANCE which should be handled by trained staff only.

Applications

- Western Blot (Cell lysate)

Western blot analysis of HepG2 cell lysate with CCBP2 polyclonal antibody (Cat # PAB24976).

- Immunohistochemistry

- Immunofluorescence

Gene Info — CCBP2

Entrez GeneID	1238
Gene Name	CCBP2
Gene Alias	CCR10, CCR9, CMKBR9, D6, MGC126678, MGC138250, hD6
Gene Description	chemokine binding protein 2
Omim ID	602648
Gene Ontology	Hyperlink
Gene Summary	<p>This gene encodes a beta chemokine receptor, which is predicted to be a seven transmembrane protein similar to G protein-coupled receptors. Chemokines and their receptor-mediated signal transduction are critical for the recruitment of effector immune cells to the inflammation site. This gene is expressed in a range of tissues and hemopoietic cells. The expression of this receptor in lymphatic endothelial cells and overexpression in vascular tumors suggested its function in chemokine-driven recirculation of leukocytes and possible chemokine effects on the development and growth of vascular tumors. This receptor appears to bind the majority of beta-chemokine family members; however, its specific function remains unknown. This gene is mapped to chromosome 3p21.3, a region that includes a cluster of chemokine receptor genes. [provided by RefSeq]</p>
Other Designations	CC-chemokine-binding receptor JAB61 chemokine (C-C motif) receptor 9 chemokine (C-C) receptor 9 chemokine receptor D6

Disease

- [Genetic Predisposition to Disease](#)
- [Hepatitis C](#)
- [Kidney Failure](#)
- [Liver Cirrhosis](#)