

CDH3 polyclonal antibody

Catalog # PAB24971

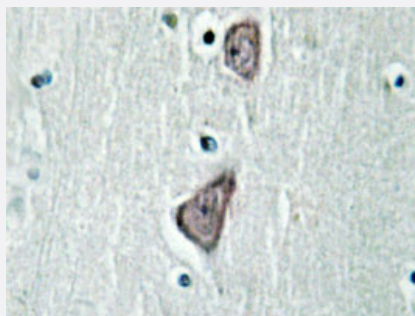
Size 100 uL

Applications



Western Blot (Cell lysate)

Western blot analysis of K-562 cell lysate with CDH3 polyclonal antibody (Cat # PAB24971).



Immunohistochemistry (Formalin/PFA-fixed paraffin-embedded sections)

Immunohistochemical analysis of paraffin-embedded human brain tissue using CDH3 polyclonal antibody (Cat # PAB24971).

Specification

Product Description	Rabbit polyclonal antibody raised against synthetic peptide of CDH3.
Immunogen	A synthetic peptide corresponding to CDH3.
Host	Rabbit
Theoretical MW (kDa)	86
Reactivity	Human
Specificity	CDH3 polyclonal antibody detects endogenous levels of CDH3 protein only when phosphorylated at G78.

Form	Liquid
Purification	Antigen affinity purification
Concentration	1 mg/mL
Recommend Usage	Western Blot (1:500-1:1000) Immunohistochemistry (1:50-1:200) The optimal working dilution should be determined by the end user.
Storage Buffer	In PBS, pH 7.2 (0.05% sodium azide)
Storage Instruction	Store at 4°C. For long term storage store at -20°C. Aliquot to avoid repeated freezing and thawing.
Note	This product contains sodium azide: a POISONOUS AND HAZARDOUS SUBSTANCE which should be handled by trained staff only.

Applications

- Western Blot (Cell lysate)

Western blot analysis of K-562 cell lysate with CDH3 polyclonal antibody (Cat # PAB24971).

- Immunohistochemistry (Formalin/PFA-fixed paraffin-embedded sections)

Immunohistochemical analysis of paraffin-embedded human brain tissue using CDH3 polyclonal antibody (Cat # PAB24971).

Gene Info — CDH3

Entrez GeneID	1001
Gene Name	CDH3
Gene Alias	CDHP, HJMD, PCAD
Gene Description	cadherin 3, type 1, P-cadherin (placental)
Omim ID	114021 601553
Gene Ontology	Hyperlink

Gene Summary

This gene is a classical cadherin from the cadherin superfamily. The encoded protein is a calcium-dependent cell-cell adhesion glycoprotein comprised of five extracellular cadherin repeats, a transmembrane region and a highly conserved cytoplasmic tail. This gene is located in a six-cadherin cluster in a region on the long arm of chromosome 16 that is involved in loss of heterozygosity events in breast and prostate cancer. In addition, aberrant expression of this protein is observed in cervical adenocarcinomas. Mutations in this gene have been associated with congenital hypotrichosis with juvenile macular dystrophy. [provided by RefSeq]

Other Designations

cadherin 3, type 1|calcium-dependent adhesion protein, placental

Pathway

- [Cell adhesion molecules \(CAMs\)](#)

Disease

- [Colitis](#)
- [Genetic Predisposition to Disease](#)