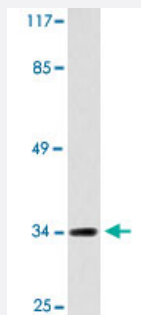


# DLX4 polyclonal antibody

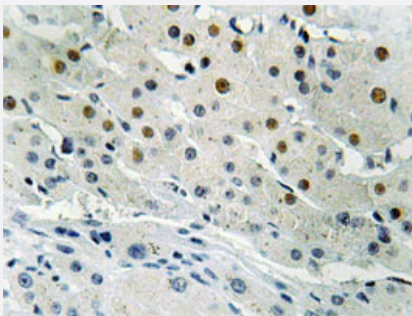
Catalog # PAB24957      Size 100 uL

## Applications



### Western Blot (Cell lysate)

Western blot analysis of COLO 205 cell lysate with DLX4 polyclonal antibody (Cat # PAB24957).



### Immunohistochemistry (Formalin/PFA-fixed paraffin-embedded sections)

Immunohistochemical analysis of paraffin-embedded human liver carcinoma tissue using DLX4 polyclonal antibody (Cat # PAB24957).

## Specification

<b>Product Description</b>	Rabbit polyclonal antibody raised against synthetic peptide of DLX4.
<b>Immunogen</b>	A synthetic peptide corresponding to DLX4.
<b>Host</b>	Rabbit
<b>Theoretical MW (kDa)</b>	34
<b>Reactivity</b>	Human
<b>Specificity</b>	DLX4 polyclonal antibody detects endogenous levels of DLX4 protein.
<b>Form</b>	Liquid

<b>Purification</b>	Antigen affinity purification
<b>Concentration</b>	1 mg/mL
<b>Recommend Usage</b>	Western Blot (1:500-1:1000) Immunohistochemistry (1:50-1:200) Immunofluorescence (1:50-1:200) The optimal working dilution should be determined by the end user.
<b>Storage Buffer</b>	In PBS, pH 7.2 (0.05% sodium azide)
<b>Storage Instruction</b>	Store at 4°C. For long term storage store at -20°C. Aliquot to avoid repeated freezing and thawing.
<b>Note</b>	This product contains sodium azide: a POISONOUS AND HAZARDOUS SUBSTANCE which should be handled by trained staff only.

## Applications

- Western Blot (Cell lysate)

Western blot analysis of COLO 205 cell lysate with DLX4 polyclonal antibody (Cat # PAB24957).

- Immunohistochemistry (Formalin/PFA-fixed paraffin-embedded sections)

Immunohistochemical analysis of paraffin-embedded human liver carcinoma tissue using DLX4 polyclonal antibody (Cat # PAB24957).

- Immunofluorescence

## Gene Info — DLX4

<b>Entrez GeneID</b>	<a href="#">1748</a>
<b>Gene Name</b>	DLX4
<b>Gene Alias</b>	BP1, DLX7, DLX8, DLX9
<b>Gene Description</b>	distal-less homeobox 4
<b>Omim ID</b>	<a href="#">601911</a>
<b>Gene Ontology</b>	<a href="#">Hyperlink</a>

**Gene Summary**

Many vertebrate homeo box-containing genes have been identified on the basis of their sequence similarity with Drosophila developmental genes. Members of the Dlx gene family contain a homeo box that is related to that of Distal-less (Dll), a gene expressed in the head and limbs of the developing fruit fly. The Distal-less (Dlx) family of genes comprises at least 6 different members, DLX1-DLX6. The DLX proteins are postulated to play a role in forebrain and craniofacial development. Three transcript variants have been described for this gene, however, the full length nature of one variant has not been described. Studies of the two splice variants revealed that one encoded isoform functions as a repressor of the beta-globin gene while the other isoform lacks that function. [provided by RefSeq]

**Other Designations**

beta protein 1|distal-less homeo box 7|distal-less homeo box 9

**Disease**

- [Cleft Lip](#)
- [Cleft Palate](#)
- [Tooth Abnormalities](#)