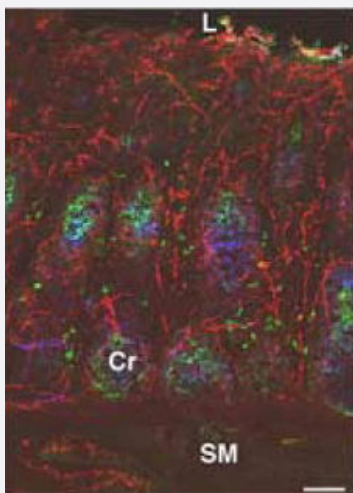


PGP 9.5 polyclonal antibody

Catalog # PAB24946

Size 50 uL

Applications



Immunofluorescence

PGP 9.5 staining of epithelial cells in porcine distal colon. Nerve fibers immunoreactive for the neural marker PGP 9.5 (red) are in close proximity to both IgA immunoreactive plasma cells (green) and epithelial cells immunoreactive for SC (blue) in the colonic crypts.

Abbreviations: Cr, colonic crypt; L, intestinal lumen; SM, submucosa. Scale bar: 100 um.

Specification

Product Description Rabbit polyclonal antibody raised against synthetic peptide of PGP 9.5.

Immunogen A synthetic peptide corresponding to PGP 9.5.

Sequence ASSEDLLKDAAKVCR

Host Rabbit

Form Liquid

Recommend Usage Western Blot (1:1000)
Immunohistochemistry (1:5000)
The optimal working dilution should be determined by the end user.

Storage Buffer In whole serum (0.05% sodium azide)

Storage Instruction Store at -20°C.
Aliquot to avoid repeated freezing and thawing.

Note

This product contains sodium azide: a POISONOUS AND HAZARDOUS SUBSTANCE which should be handled by trained staff only.

Applications

- Western Blot
- Immunohistochemistry
- Immunofluorescence

PGP 9.5 staining of epithelial cells in porcine distal colon. Nerve fibers immunoreactive for the neural marker PGP 9.5 (red) are in close proximity to both IgA immunoreactive plasma cells (green) and epithelial cells immunoreactive for SC (blue) in the colonic crypts.

Abbreviations: Cr, colonic crypt; L, intestinal lumen; SM, submucosa. Scale bar: 100 μ m.