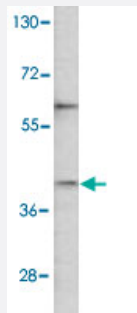


YBX2 polyclonal antibody

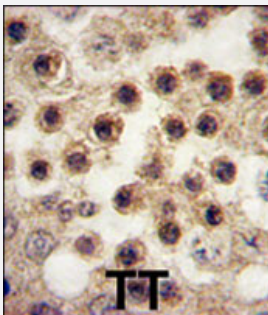
Catalog # PAB2492 Size 400 uL

Applications



Western Blot (Cell lysate)

Western blot analysis of Jurkat cell lysate with YBX2 polyclonal antibody (Cat # PAB2492).



Immunohistochemistry (Formalin/PFA-fixed paraffin-embedded sections)

Formalin-fixed and paraffin-embedded human testis tissue reacted with YBX2 polyclonal antibody (Cat # PAB2492), which was peroxidase-conjugated to the secondary antibody, followed by DAB staining. This data demonstrates the use of this antibody for immunohistochemistry; clinical relevance has not been evaluated.

Specification

Product Description	Rabbit polyclonal antibody raised against synthetic peptide of YBX2.
Immunogen	A synthetic peptide (conjugated with KLH) corresponding to C-terminus of human YBX2.
Host	Rabbit
Reactivity	Human
Form	Liquid
Purification	Ammonium sulfate precipitation

Recommend Usage	Western Blot (1:1000) Immunohistochemistry (1:10-50) The optimal working dilution should be determined by the end user.
Storage Buffer	In PBS (0.09% sodium azide)
Storage Instruction	Store at 4°C. For long term storage store at -20°C. Aliquot to avoid repeated freezing and thawing.
Note	This product contains sodium azide: a POISONOUS AND HAZARDOUS SUBSTANCE which should be handled by trained staff only.

Applications

- Western Blot (Cell lysate)

Western blot analysis of Jurkat cell lysate with YBX2 polyclonal antibody (Cat # PAB2492).

- Immunohistochemistry (Formalin/PFA-fixed paraffin-embedded sections)

Formalin-fixed and paraffin-embedded human testis tissue reacted with YBX2 polyclonal antibody (Cat # PAB2492), which was peroxidase-conjugated to the secondary antibody, followed by DAB staining. This data demonstrates the use of this antibody for immunohistochemistry; clinical relevance has not been evaluated.

Gene Info — YBX2

Entrez GeneID	51087
Protein Accession#	NP_057066;Q9Y2T7
Gene Name	YBX2
Gene Alias	CONTRIN, CSDA3, DBPC, MGC45104, MSY2
Gene Description	Y box binding protein 2
Omim ID	611447
Gene Ontology	Hyperlink
Gene Summary	YBX2 is a germ-cell specific member of the vertebrate Y box family of nucleic acid-binding proteins (Gu et al., 1998 [PubMed 9780336]; Tekur et al., 1999 [PubMed 10100484]).[supplied by OMIM]
Other Designations	germ cell specific Y-box binding protein

Publication Reference

- [Expression and cellular localization of dbpC/Contrin in germ cell tumor cell lines.](#)

Yoshida T, Izumi H, Uchiumi T, Sasaguri Y, Tanimoto A, Matsumoto T, Naito S, Kohno K.

Biochimica et Biophysica Acta 2006 Jan; 1759(1-2):80.

Application: IF, WB, Human, A2780, NEC8, T24, TERA1 cells

- [Expression of Y-box-binding protein dbpC/contrin, a potentially new cancer/testis antigen.](#)

Kohno Y, Matsuki Y, Tanimoto A, Izumi H, Uchiumi T, Kohno K, Shimajiri S, Sasaguri Y.

British Journal of Cancer 2006 Mar; 94(5):710.

Application: IF, IHC-P, WB, Human, Human testicular seminoma and ovarian adenocarcinoma, NEC8 cells

- [Contrin, the human homologue of a germ-cell Y-box-binding protein: cloning, expression, and chromosomal localization.](#)

Tekur S, Pawlak A, Guellaen G, Hecht NB.

Journal of Andrology 1999 Jan; 20(1):135.

Disease

- [Azoospermia](#)
- [Genetic Predisposition to Disease](#)
- [Infertility](#)
- [Oligospermia](#)