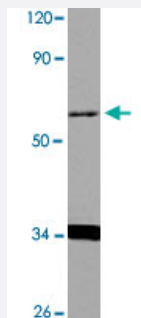


TBX22 polyclonal antibody

Catalog # PAB24899 Size 100 uL

Applications



Western Blot (Cell lysate)

Western blot analysis of HeLa cell lysate with TBX22 polyclonal antibody (Cat # PAB24899) at 1:500 dilution.

Specification

Product Description	Rabbit polyclonal antibody raised against synthetic peptide of TBX22.
Immunogen	A synthetic peptide corresponding to TBX22.
Host	Rabbit
Theoretical MW (kDa)	~60.0
Reactivity	Human
Specificity	TBX22 polyclonal antibody detects endogenous levels of TBX22 protein.
Form	Liquid
Purification	Antigen affinity purification
Recommend Usage	Western Blot (1:500-1:1000) Immunohistochemistry (1:50-1:200) The optimal working dilution should be determined by the end user.
Storage Buffer	In PBS, pH 7.2 (0.09% sodium azide)

Storage Instruction

Store at 4°C. For long term storage store at -20°C.
Aliquot to avoid repeated freezing and thawing.

Note

This product contains sodium azide: a POISONOUS AND HAZARDOUS SUBSTANCE which should be handled by trained staff only.

Applications

- Western Blot (Cell lysate)

Western blot analysis of HeLa cell lysate with TBX22 polyclonal antibody (Cat # PAB24899) at 1:500 dilution.

- Immunohistochemistry

Gene Info — TBX22

Entrez GeneID [50945](#)

Gene Name TBX22

Gene Alias CLPA, TBXX, dJ795G23.1

Gene Description T-box 22

Omim ID [300307](#) [303400](#)

Gene Ontology [Hyperlink](#)

Gene Summary

This gene is a member of a phylogenetically conserved family of genes that share a common DNA-binding domain, the T-box. T-box genes encode transcription factors involved in the regulation of developmental processes. Mutations in this gene have been associated with the inherited X-linked disorder, Cleft palate with ankyloglossia, and it is believed to play a major role in human palatogenesis. Alternatively spliced transcript variants encoding different isoforms have been found for this gene. [provided by RefSeq]

Other Designations OTTHUMP00000023602|OTTHUMP00000023603|OTTHUMP00000023604

Disease

- [Cleft Lip](#)
- [Cleft Palate](#)
- [Genetic Predisposition to Disease](#)