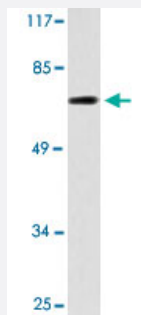


ATF6B polyclonal antibody

Catalog # PAB24894 Size 100 uL

Applications



Western Blot (Cell lysate)

Western blot analysis of COLO 205 cell lysate with ATF6B polyclonal antibody (Cat # PAB24894).

Specification

Product Description	Rabbit polyclonal antibody raised against synthetic peptide of ATF6B.
Immunogen	A synthetic peptide corresponding to ATF6B.
Host	Rabbit
Theoretical MW (kDa)	76
Reactivity	Human
Specificity	ATF6B polyclonal antibody detects endogenous levels of ATF6B protein.
Form	Liquid
Purification	Antigen affinity purification
Concentration	1 mg/mL
Recommend Usage	Western Blot (1:500-1:1000) The optimal working dilution should be determined by the end user.
Storage Buffer	In PBS, pH 7.2 (0.05% sodium azide)

Storage Instruction

Store at 4°C. For long term storage store at -20°C.
Aliquot to avoid repeated freezing and thawing.

Note

This product contains sodium azide: a POISONOUS AND HAZARDOUS SUBSTANCE which should be handled by trained staff only.

Applications

- Western Blot (Cell lysate)

Western blot analysis of COLO 205 cell lysate with ATF6B polyclonal antibody (Cat # PAB24894).

Gene Info — ATF6B

Entrez GeneID[1388](#)**Gene Name**

ATF6B

Gene Alias

CREB-RP, CREBL1, FLJ10066, G13

Gene Description

activating transcription factor 6 beta

Omim ID[600984](#)**Gene Ontology**[Hyperlink](#)**Gene Summary**

The protein encoded by this gene is a transcription factor in the unfolded protein response (UPR) pathway during ER stress. Either as a homodimer or as a heterodimer with ATF6-alpha, the encoded protein binds to the ER stress response element, interacting with nuclear transcription factor Y to activate UPR target genes. The protein is normally found in the membrane of the endoplasmic reticulum; however, under ER stress, the N-terminal cytoplasmic domain is cleaved from the rest of the protein and translocates to the nucleus. Two transcript variants encoding different isoforms have been found for this gene. [provided by RefSeq]

Other Designations

Creb-related protein|OTTHUMP00000029433|cAMP responsive element binding protein-like 1|cy clic AMP-dependent transcription factor ATF-6 beta|protein G13

Disease

- [Cardiovascular Diseases](#)
- [Diabetes Mellitus](#)
- [Edema](#)

- [Genetic Predisposition to Disease](#)
- [Kidney Failure](#)
- [Lupus Erythematosus](#)