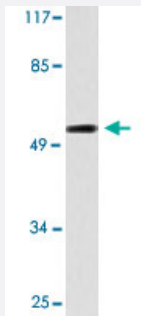


CDKL2 polyclonal antibody

Catalog # PAB24893 Size 100 uL

Applications



Western Blot (Cell lysate)

Western blot analysis of Jurkat cell lysate with CDKL2 polyclonal antibody (Cat # PAB24893).

Specification

Product Description	Rabbit polyclonal antibody raised against synthetic peptide of CDKL2.
Immunogen	A synthetic peptide corresponding to CDKL2.
Host	Rabbit
Theoretical MW (kDa)	56
Reactivity	Human
Specificity	CDKL2 polyclonal antibody detects endogenous levels of CDKL2 protein.
Form	Liquid
Purification	Antigen affinity purification
Concentration	1 mg/mL
Recommend Usage	Western Blot (1:500-1:1000) Immunohistochemistry (1:50-1:200) The optimal working dilution should be determined by the end user.
Storage Buffer	In PBS, pH 7.2 (0.05% sodium azide)

Storage Instruction

Store at 4°C. For long term storage store at -20°C.
Aliquot to avoid repeated freezing and thawing.

Note

This product contains sodium azide: a POISONOUS AND HAZARDOUS SUBSTANCE which should be handled by trained staff only.

Applications

- Western Blot (Cell lysate)

Western blot analysis of Jurkat cell lysate with CDKL2 polyclonal antibody (Cat # PAB24893).

- Immunohistochemistry

Gene Info — CDKL2

Entrez GeneID[8999](#)**Gene Name**

CDKL2

Gene Alias

KKIAMRE, P56

Gene Description

cyclin-dependent kinase-like 2 (CDC2-related kinase)

Omim ID[603442](#)**Gene Ontology**[Hyperlink](#)**Gene Summary**

This gene product is a member of a large family of CDC2-related serine/threonine protein kinases. It accumulates primarily in the cytoplasm, with lower levels in the nucleus. [provided by RefSeq]

Other Designations

CDC2-related kinase|cyclin-dependent kinase-like 2|p56 KKIAMRE protein kinase|serine/threonine protein kinase KKIAMRE