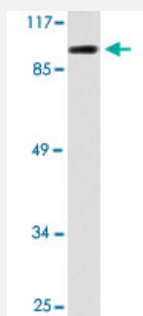


GTF3C2 polyclonal antibody

Catalog # PAB24892 Size 100 uL

Applications



Western Blot (Cell lysate)

Western blot analysis of HepG2 cell lysate with GTF3C2 polyclonal antibody (Cat # PAB24892).

Specification

Product Description	Rabbit polyclonal antibody raised against synthetic peptide of GTF3C2.
Immunogen	A synthetic peptide corresponding to GTF3C2.
Host	Rabbit
Theoretical MW (kDa)	100
Reactivity	Human
Specificity	GTF3C2 polyclonal antibody detects endogenous levels of GTF3C2 protein.
Form	Liquid
Purification	Antigen affinity purification
Concentration	1 mg/mL
Recommend Usage	Western Blot (1:500-1:1000) Immunohistochemistry (1:50-1:200) The optimal working dilution should be determined by the end user.
Storage Buffer	In PBS, pH 7.2 (0.05% sodium azide)

Storage Instruction

Store at 4°C. For long term storage store at -20°C.
Aliquot to avoid repeated freezing and thawing.

Note

This product contains sodium azide: a POISONOUS AND HAZARDOUS SUBSTANCE which should be handled by trained staff only.

Applications

- Western Blot (Cell lysate)

Western blot analysis of HepG2 cell lysate with GTF3C2 polyclonal antibody (Cat # PAB24892).

- Immunohistochemistry

Gene Info — GTF3C2

Entrez GeneID[2976](#)**Gene Name**

GTF3C2

Gene Alias

KIAA0011, TFIIIC-BETA, TFIIIC110

Gene Description

general transcription factor IIIC, polypeptide 2, beta 110kDa

Omim ID[604883](#)**Gene Ontology**[Hyperlink](#)**Gene Summary**

polypeptide 2

Other Designations

general transcription factor IIIC, polypeptide 2 (beta subunit, 110kD)