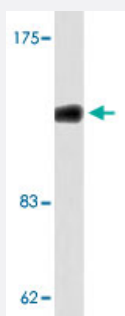


DGKD polyclonal antibody

Catalog # PAB24888

Size 100 uL

Applications



Western Blot (Cell lysate)

Western blot analysis of HUVEC cell lysate with DGKD polyclonal antibody (Cat # PAB24888).

Specification

Product Description	Rabbit polyclonal antibody raised against synthetic peptide of DGKD.
Immunogen	A synthetic peptide corresponding to DGKD.
Host	Rabbit
Theoretical MW (kDa)	135
Reactivity	Human
Specificity	DGKD polyclonal antibody detects endogenous levels of DGKD protein.
Form	Liquid
Purification	Antigen affinity purification
Concentration	1 mg/mL
Purity	> 95% by SDS-PAGE

Recommend Usage	Western Blot (1:500-1:1000) Immunohistochemistry (1:50-1:200) Immunofluorescence (1:50-1:200) The optimal working dilution should be determined by the end user.
Storage Buffer	In 1x PBS, pH 7.2 (0.05% sodium azide)
Storage Instruction	Store at 4°C. For long term storage store at -20°C. Aliquot to avoid repeated freezing and thawing.
Note	This product contains sodium azide: a POISONOUS AND HAZARDOUS SUBSTANCE which should be handled by trained staff only.

Applications

- Western Blot (Cell lysate)

Western blot analysis of HUVEC cell lysate with DGKD polyclonal antibody (Cat # PAB24888).

- Immunohistochemistry (Formalin/PFA-fixed paraffin-embedded sections)
- Immunofluorescence

Gene Info — DGKD

Entrez GeneID	8527
Gene Name	DGKD
Gene Alias	DGKdelta, FLJ26930, KIAA0145, dgkd-2
Gene Description	diacylglycerol kinase, delta 130kDa
Omim ID	601826
Gene Ontology	Hyperlink
Gene Summary	This gene encodes a cytoplasmic enzyme that phosphorylates diacylglycerol to produce phosphatidic acid. Diacylglycerol and phosphatidic acid are two lipids that act as second messengers in signaling cascades. Their cellular concentrations are regulated by the encoded protein, and so it is thought to play an important role in cellular signal transduction. Alternative splicing results in two transcript variants encoding different isoforms. [provided by RefSeq]
Other Designations	DAG kinase delta diacylglycerol kinase, delta (130kD) diglyceride kinase

Pathway

- [Glycerolipid metabolism](#)
- [Glycerophospholipid metabolism](#)
- [Metabolic pathways](#)
- [Phosphatidylinositol signaling system](#)

Disease

- [Tobacco Use Disorder](#)