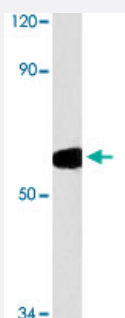


TLE2 polyclonal antibody

Catalog # PAB24883 Size 100 uL

Applications



Western Blot (Cell lysate)

Western blot analysis of HeLa cell lysate with TLE2 polyclonal antibody (Cat # PAB24883).

Specification

Product Description Rabbit polyclonal antibody raised against synthetic peptide of TLE2.

Immunogen A synthetic peptide corresponding to TLE2.

Host Rabbit

Theoretical MW (kDa) ~65.0

Reactivity Human

Specificity TLE2 polyclonal antibody detects endogenous levels of TLE2 protein.

Form Liquid

Purification Antigen affinity purification

Purity > 95% by SDS-PAGE

Recommend Usage Western Blot (1:500-1000)
Immunohistochemistry (1:50-1:200)
The optimal working dilution should be determined by the end user.

Storage Buffer In 1x PBS, pH 7.2 (0.09% sodium azide)

Storage Instruction

Store at 4°C. For long term storage store at -20°C.
Aliquot to avoid repeated freezing and thawing.

Note

This product contains sodium azide: a POISONOUS AND HAZARDOUS SUBSTANCE which should be handled by trained staff only.

Applications

- Western Blot (Cell lysate)

Western blot analysis of HeLa cell lysate with TLE2 polyclonal antibody (Cat # PAB24883).

- Immunohistochemistry (Formalin/PFA-fixed paraffin-embedded sections)

Gene Info — TLE2

Entrez GeneID[7089](#)**Gene Name**

TLE2

Gene Alias

ESG, ESG2, FLJ41188, GRG2

Gene Description

transducin-like enhancer of split 2 (E(sp1) homolog, Drosophila)

Omim ID[601041](#)**Gene Ontology**[Hyperlink](#)**Gene Summary**

O

Other Designations

enhancer of split groucho 2|transducin-like enhancer of split 2, homolog of Drosophila E(sp1)|transducin-like enhancer protein 2