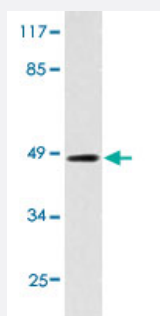


# KRT18 polyclonal antibody

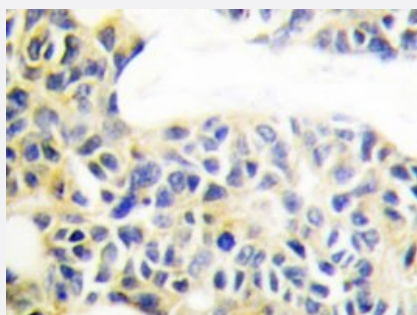
Catalog # PAB24869      Size 100 uL

## Applications



### Western Blot (Cell lysate)

Western blot analysis of HUVEC cell lysate with KRT18 polyclonal antibody (Cat # PAB24869).



### Immunohistochemistry (Formalin/PFA-fixed paraffin-embedded sections)

Immunohistochemical analysis of paraffin-embedded human breast carcinoma tissue using KRT18 polyclonal antibody (Cat # PAB24869).

## Specification

Product Description	Rabbit polyclonal antibody raised against synthetic peptide of KRT18.
Immunogen	A synthetic peptide corresponding to KRT18.
Host	Rabbit
Theoretical MW (kDa)	48
Reactivity	Human
Specificity	KRT18 polyclonal antibody detects endogenous levels of KRT18 protein.
Form	Liquid

Purification	Antigen affinity purification
Concentration	1 mg/mL
Purity	> 95% by SDS-PAGE
Recommend Usage	Western Blot (1:500-1:1000) Immunohistochemistry (1:50-1:200) Immunofluorescence (1:50-1:200) The optimal working dilution should be determined by the end user.
Storage Buffer	In 1x PBS, pH 7.2 (0.05% sodium azide)
Storage Instruction	Store at 4°C. For long term storage store at -20°C. Aliquot to avoid repeated freezing and thawing.
Note	This product contains sodium azide: a POISONOUS AND HAZARDOUS SUBSTANCE which should be handled by trained staff only.

## Applications

- Western Blot (Cell lysate)

Western blot analysis of HUVEC cell lysate with KRT18 polyclonal antibody (Cat # PAB24869).

- Immunohistochemistry (Formalin/PFA-fixed paraffin-embedded sections)

Immunohistochemical analysis of paraffin-embedded human breast carcinoma tissue using KRT18 polyclonal antibody (Cat # PAB24869).

- Immunofluorescence

## Gene Info — KRT18

Entrez GeneID	<a href="#">3875</a>
Gene Name	KRT18
Gene Alias	CYK18, K18
Gene Description	keratin 18
Omim ID	<a href="#">148070</a> <a href="#">215600</a>
Gene Ontology	<a href="#">Hyperlink</a>

**Gene Summary**

KRT18 encodes the type I intermediate filament chain keratin 18. Keratin 18, together with its filament partner keratin 8, are perhaps the most commonly found members of the intermediate filament gene family. They are expressed in single layer epithelial tissues of the body. Mutations in this gene have been linked to cryptogenic cirrhosis. Two transcript variants encoding the same protein have been found for this gene. [provided by RefSeq]

**Other Designations**

cell proliferation-inducing protein 46|cytokeratin 18

## Pathway

- [Pathogenic Escherichia coli infection - EHEC](#)

## Disease

- [Cleft Lip](#)
- [Cleft Palate](#)
- [Drug-Induced Liver Injury](#)
- [Genetic Predisposition to Disease](#)
- [Liver Cirrhosis](#)
- [Liver Failure](#)