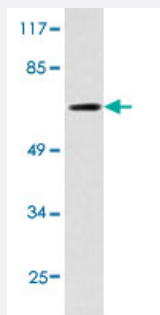


GRB10 polyclonal antibody

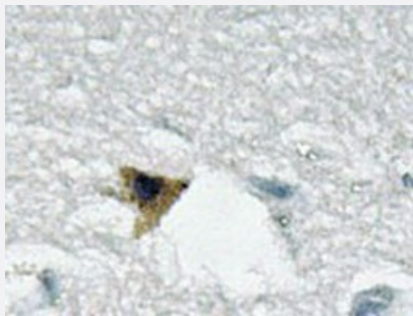
Catalog # PAB24857 Size 100 uL

Applications



Western Blot (Cell lysate)

Western blot analysis of NIH/3T3 cell lysate with GRB10 polyclonal antibody (Cat # PAB24857).



Immunohistochemistry (Formalin/PFA-fixed paraffin-embedded sections)

Immunohistochemical analysis of paraffin-embedded human brain tissue using GRB10 polyclonal antibody (Cat # PAB24857).

Specification

Product Description	Rabbit polyclonal antibody raised against synthetic peptide of GRB10.
Immunogen	A synthetic peptide corresponding to GRB10.
Host	Rabbit
Theoretical MW (kDa)	67
Reactivity	Human
Specificity	GRB10 polyclonal antibody detects endogenous levels of GRB10 protein.
Form	Liquid

Purification	Antigen affinity purification
Concentration	1 mg/mL
Purity	> 95% by SDS-PAGE
Recommend Usage	Western Blot (1:500-1:1000) Immunohistochemistry (1:50-1:200) Immunofluorescence (1:50-1:200) The optimal working dilution should be determined by the end user.
Storage Buffer	In 1x PBS, pH 7.2 (0.05% sodium azide)
Storage Instruction	Store at 4°C. For long term storage store at -20°C. Aliquot to avoid repeated freezing and thawing.
Note	This product contains sodium azide: a POISONOUS AND HAZARDOUS SUBSTANCE which should be handled by trained staff only.

Applications

- Western Blot (Cell lysate)

Western blot analysis of NIH/3T3 cell lysate with GRB10 polyclonal antibody (Cat # PAB24857).

- Immunohistochemistry (Formalin/PFA-fixed paraffin-embedded sections)

Immunohistochemical analysis of paraffin-embedded human brain tissue using GRB10 polyclonal antibody (Cat # PAB24857).

- Immunofluorescence

Gene Info — GRB10

Entrez GeneID	2887
Gene Name	GRB10
Gene Alias	GRB-IR, Grb-10, IRBP, KIAA0207, MEG1, RSS
Gene Description	growth factor receptor-bound protein 10
Omim ID	601523
Gene Ontology	Hyperlink

Gene Summary

The product of this gene belongs to a small family of adapter proteins that are known to interact with a number of receptor tyrosine kinases and signaling molecules. This gene encodes a growth factor receptor-binding protein that interacts with insulin receptors and insulin-like growth-factor receptors. Overexpression of some isoforms of the encoded protein inhibits tyrosine kinase activity and results in growth suppression. This gene is imprinted in a highly isoform- and tissue-specific manner. Alternatively spliced transcript variants encoding different isoforms have been identified. [provided by RefSeq]

Other Designations

GRB10 adaptor protein|insulin receptor-binding protein Grb-IR|maternally expressed gene 1

Disease

- [Birth Weight](#)
- [Diabetes Mellitus](#)
- [Overweight](#)